

Highway 744 Alignment
Little Smoky River Valley
Functional Planning Study

INFORMATION SESSION

Highway 744 Alignment Little Smoky River Valley Functional Planning Study

Information Session

June 10, 2025 - 4:00 to 7:00 pm

Club Etoile, Girouxville

WELCOME



Highway 744 Smoky River Bridge Looking South

Welcome

Highway 744 Alignment
Little Smoky River Valley
Functional Planning Study

Information Session #2

This information session is an informal drop-in format, there will be no presentation.

The purpose of this information session is to:

- Review the study process and stakeholder engagement
- Review the constraints and factors affecting development of a realignment plan
- Present the preferred alignment
- Gather your feedback

Please take a few minutes to review the display panels and discuss the study with project staff.

This is the final information session for this study, the study website will be updated with the functional plans once approved.

Study Purpose

To determine the most viable long-term river crossing location along with the best highway alignment to avoid the current geohazards.

Study Objectives

To develop a technically feasible alignment plan that:

- Provides the most appropriate design given site and implementation constraints
- Addresses geotechnical stability and safety, community interests, environmental and historical resources, drainage and other impacts
- Identifies land access requirements
- Identifies right-of-way requirements

Study Outcome

The outcome of this study will:

- Help the province understand the most practical and feasible alignment for Highway 744 crossing the Little Smoky River Valley.

Working Together

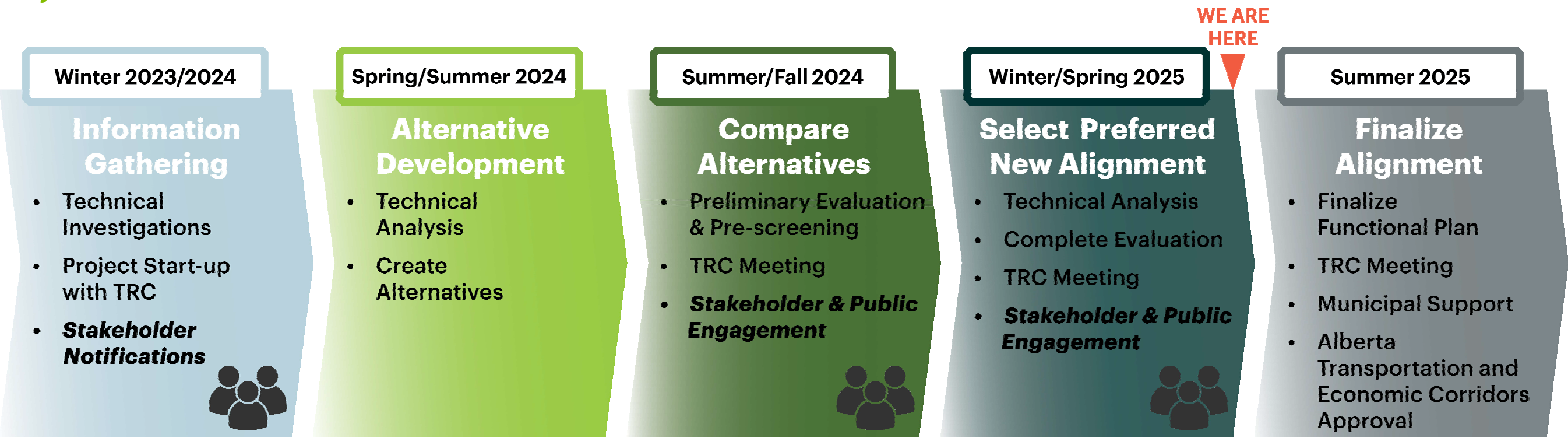
Technical Review Committee (TRC)

- The Municipal District of Smoky River is a member of the Technical Review Committee
- The Technical Review Committee guides the study process at key points

Stakeholders & Members of the Public

- The study team will obtain feedback on alternatives and outcomes

Project Process & Timeline



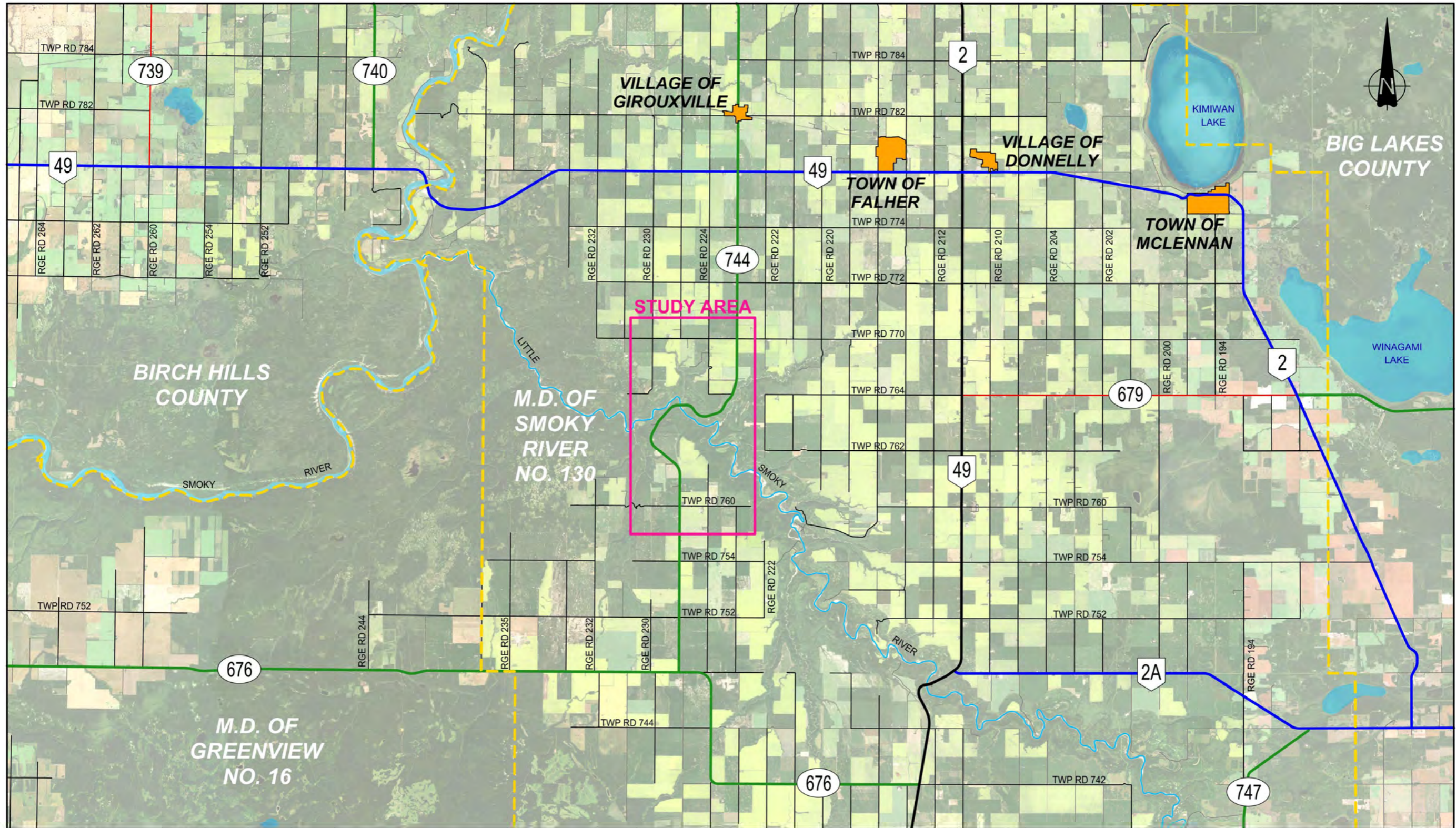
Study Background

- Highway 744 is a minor two-lane, inter-regional highway facility
- It connects Highway 676 to the south with Highway 49, Girouxville, and Falher to the north
- Important to the local community, the crossing accommodates agricultural, resource and recreational access and local travel
- With many active slide locations, the existing crossing is increasingly at risk of disruption or temporary closure
- The existing bridge will soon need a major rehabilitation or replacement

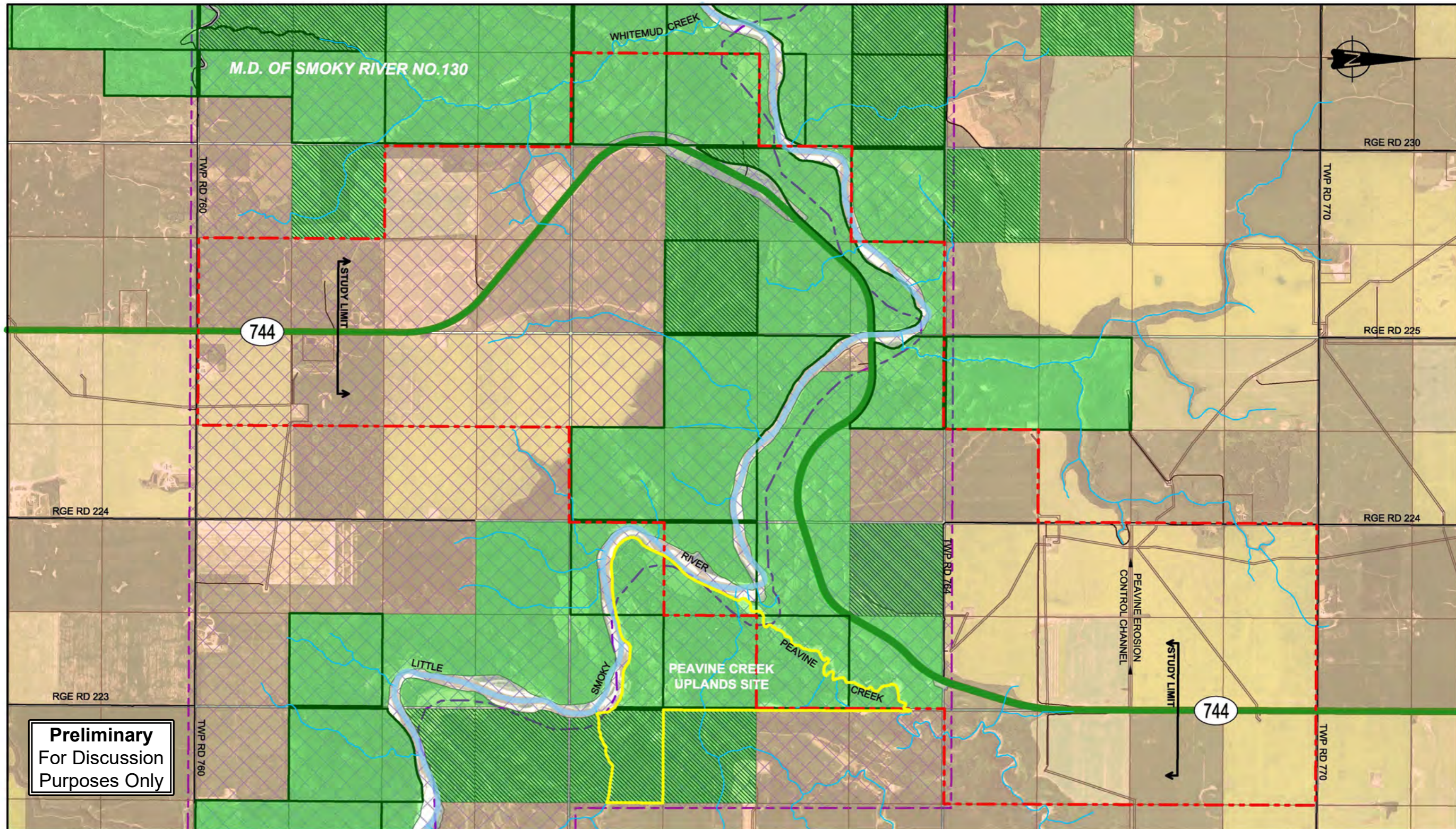


Existing Highway 64 Looking East Across the Little Smoky River

Study Location & Regional Roadway Network



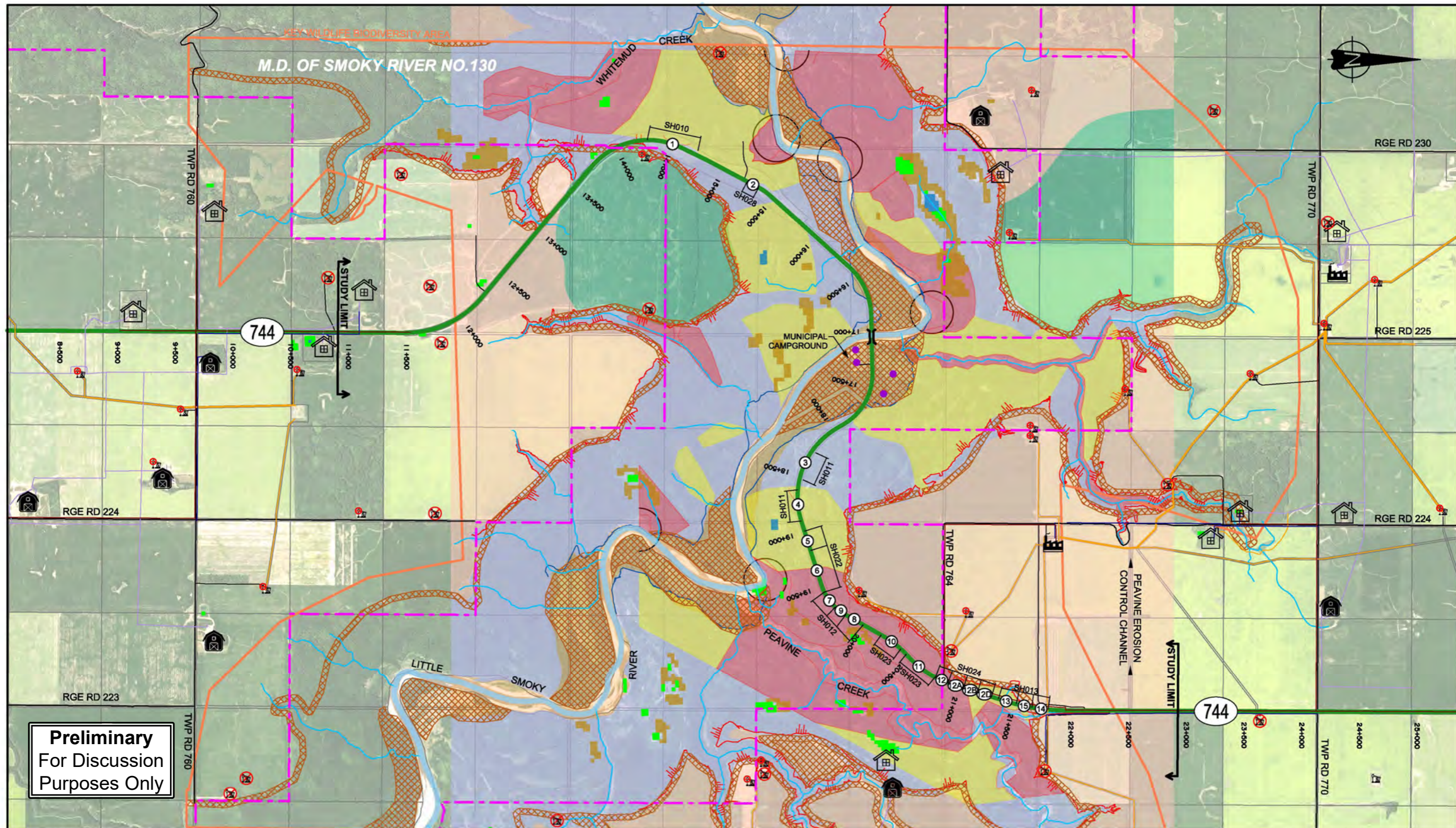
<p>CONSULTANT</p> <p>PROJECT NO. E00830A</p>	<p>LEGEND</p> <ul style="list-style-type: none"> — PROVINCIAL HIGHWAY LEVEL 1 — PROVINCIAL HIGHWAY LEVEL 2 — PROVINCIAL HIGHWAY LEVEL 3 — PROVINCIAL HIGHWAY LEVEL 4 — MUNICIPAL ROADWAY STUDY AREA M.D./COUNTY BOUNDARY TOWN/VILLAGE BOUNDARY 	<div style="border: 1px solid black; padding: 5px; width: fit-content; margin: 0 auto;"> <p>Preliminary For Discussion Purposes Only</p> </div>	<p>SCALE</p>	<p>STUDY LOCATION</p> <p>HIGHWAY 744 ALIGNMENT (LITTLE SMOKY RIVER VALLEY) FUNCTIONAL PLANNING STUDY</p>				
				<p>PHOTOGRAPHY DATE</p> <p>09-17-2020</p>	<p>LOCATION</p> <p>HIGHWAY 744:02</p>	<p>DATE</p> <p>2024-09-10</p>	<p>FIGURE</p> <p>1.2</p>	



Preliminary
For Discussion
Purposes Only

<p>CONSULTANT</p>	<p>LEGEND</p> <ul style="list-style-type: none"> LEVEL 3 HWY CLASSIFICATION MUNICIPAL ROADWAY CROWN LAND PARCEL CROWN LAND WITH GRAZING LEASE FREEHOLD LAND POTENTIALLY IMPACTED STAKEHOLDER BOUNDARY ALBERTA CONSERVATION ASSOCIATION AREA BOUNDARY CROWN LAND RESERVATION AREA BOUNDARY REGISTERED FUR MANAGEMENT AREA WATERCOURSE 		<p>SCALE</p> <p>0 0.2 0.5 1.0 km</p>		<p>LAND USE</p> <p>HIGHWAY 744 ALIGNMENT (LITTLE SMOKY RIVER VALLEY)</p> <p>FUNCTIONAL PLANNING STUDY</p>			
	<p>PROJECT NO. E00830A</p>	<p>PHOTOGRAPHY DATE 09-17-2020</p>	<p>LOCATION HIGHWAY 744:02</p>	<p>DATE 2024-09-30</p>	<p>FIGURE 1.4</p>	<p>DRAWING R-1313-PL004</p>		

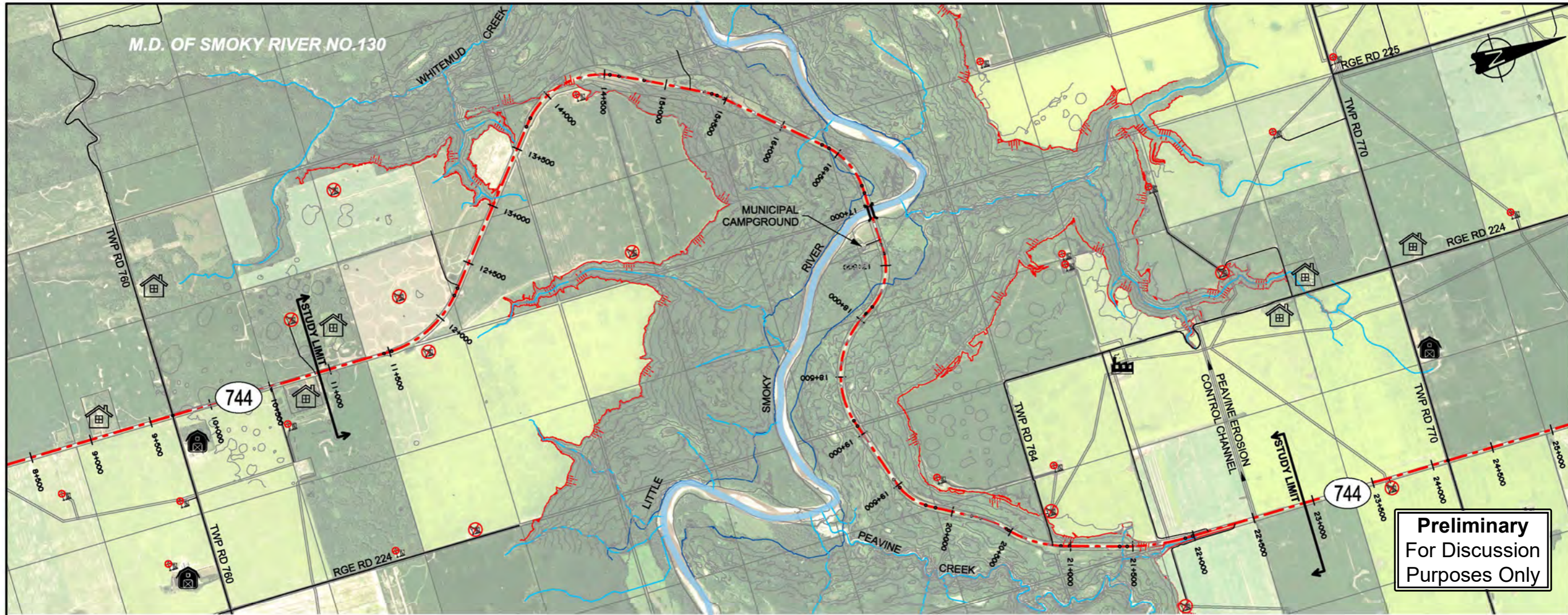
Existing Conditions



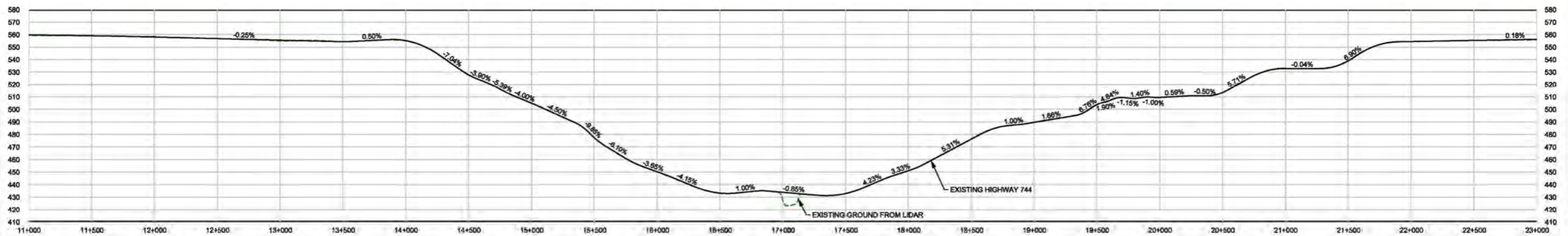
Preliminary
For Discussion
Purposes Only

CONSULTANT 	LEGEND <ul style="list-style-type: none"> LEVEL 3 HWY CLASSIFICATION MUNICIPAL ROADWAY CROWN LAND EXTENTS BRIDGE HISTORICAL <ul style="list-style-type: none"> POTENTIAL HRIA TARGET AREAS KNOWN HISTORIC RESOURCE, HRV 	GEOTECHNICAL <ul style="list-style-type: none"> ALLUVIAL DEPOSITS COLLUVIUM DEPOSITS GLACIOLACUSTRINE EOLIAN DEPOSITS QUITE ACTIVE MOVEMENT MODERATE MOVEMENT TOP OF VALLEY TOE OF VALLEY ACTIVE SCARPS 	<ul style="list-style-type: none"> ACTIVE RIVER EROSION PEACE REGION/ SWAN HILLS DISTRICT SITE NUMBER SUBSITE NUMBERS ENVIRONMENTAL <ul style="list-style-type: none"> MARSH OPEN WATER KEY WILDLIFE AND BIODIVERSITY ZONE WATERCOURSE SWAMP 	UTILITIES <ul style="list-style-type: none"> ACTIVE WELLHEAD SUSPENDED WELLHEAD ABANDONED WELLHEAD LOW PRESSURE PIPELINE HIGH PRESSURE PIPELINE POWERLINE TELUS TRENCH 	LAND DEVELOPMENT <ul style="list-style-type: none"> RESIDENCE FARM OPERATION INDUSTRY 	EXISTING CONDITIONS HIGHWAY 744 ALIGNMENT (LITTLE SMOKY RIVER VALLEY) FUNCTIONAL PLANNING STUDY		
						PROJECT NO. E00830A	SCALE 0 0.2 0.5 1.0 km	

Existing Highway



Preliminary
For Discussion
Purposes Only



CONSULTANT 	LEGEND 	ENVIRONMENTAL WATERCOURSE		GEOTECHNICAL TOP OF VALLEY TOE OF VALLEY 10m CONTOUR LINES		LAND DEVELOPMENT RESIDENCE FARM OPERATION INDUSTRY		UTILITIES ACTIVE WELLHEAD SUSPENDED WELLHEAD ABANDONED WELLHEAD		EXISTING HIGHWAY 744 HIGHWAY 744 ALIGNMENT (LITTLE SMOKY RIVER VALLEY) FUNCTIONAL PLANNING STUDY		
		PROJECT NO. E00830A	SCALE 0 0.2 0.5 1.0 km		PHOTOGRAPHY DATE 09-17-2020	LOCATION HIGHWAY 744:02	DATE 2024-09-30	FIGURE 1.8	DRAWING R-1313-PL008			

Public Input

What We Heard - October 2024

Eight (8) stakeholders and Twenty-nine (29) members of the public attended the stakeholder meeting and information session.

- No comment sheets were received
- Feedback received during the discussions held during both the stakeholder and public was generally positive
- The most common concerns heard were related to:
 - Drainage both in the valley and on adjacent properties
 - Safety and remaining service life of the existing highway alignment and bridge structure



Peavine Erosion Control Channel, Looking West

Alternative Development

Key technical factors in the development of alternatives were:

- Geotechnical stability
- Roadway design standards and constructability
- River stability and bridge placement
- Environmental and historical resources
- Landowner/leaseholder and right-of-way impacts

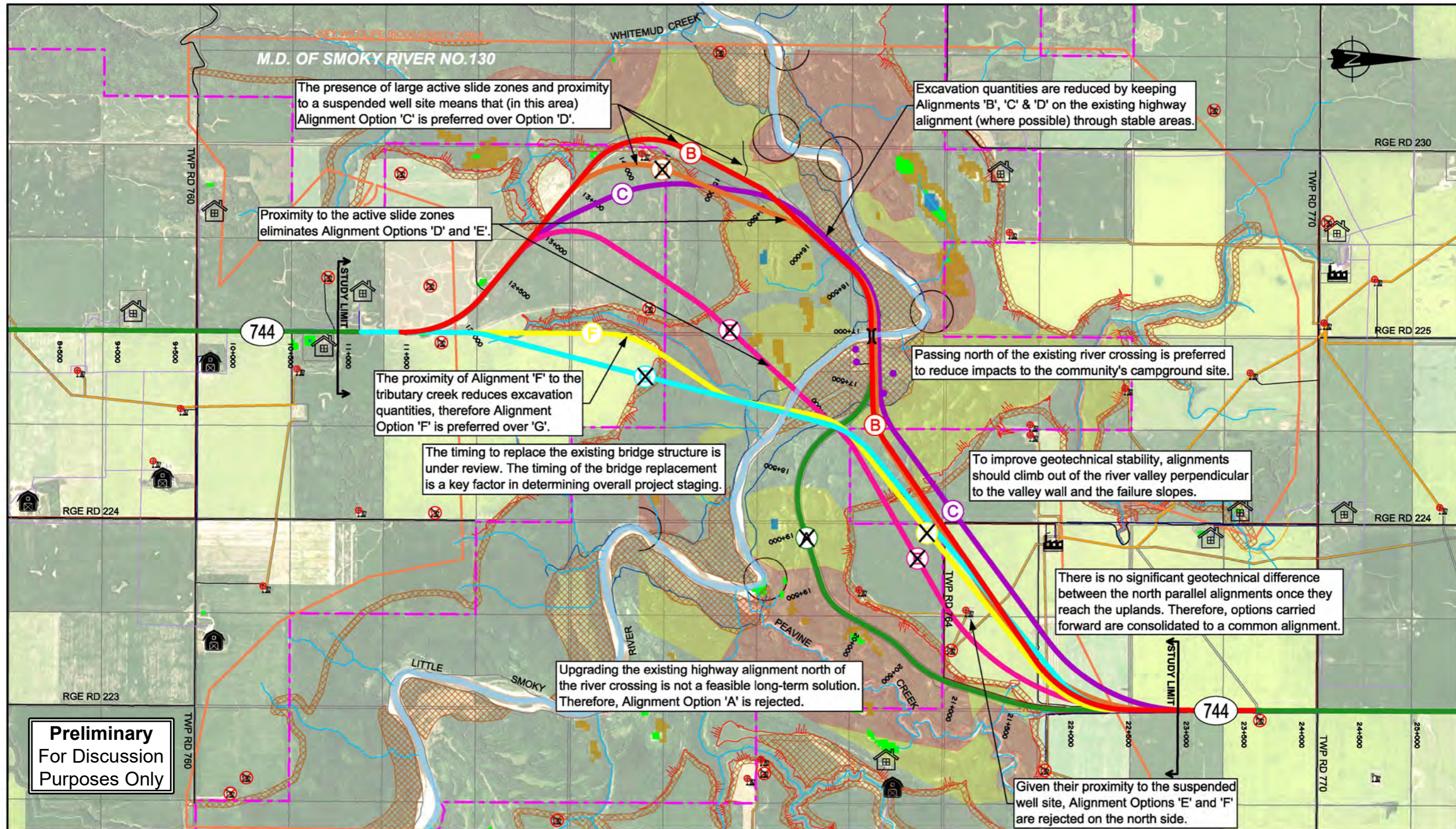
Preliminary alignment alternatives were developed and reviewed considering desirable technical outcomes.

Alignments that provided the most reasonable conditions considering the key technical factors above were carried forward and screened to identify the preferred alternative.



Highway 744 Looking Northwest Across the Little Smoky River Valley

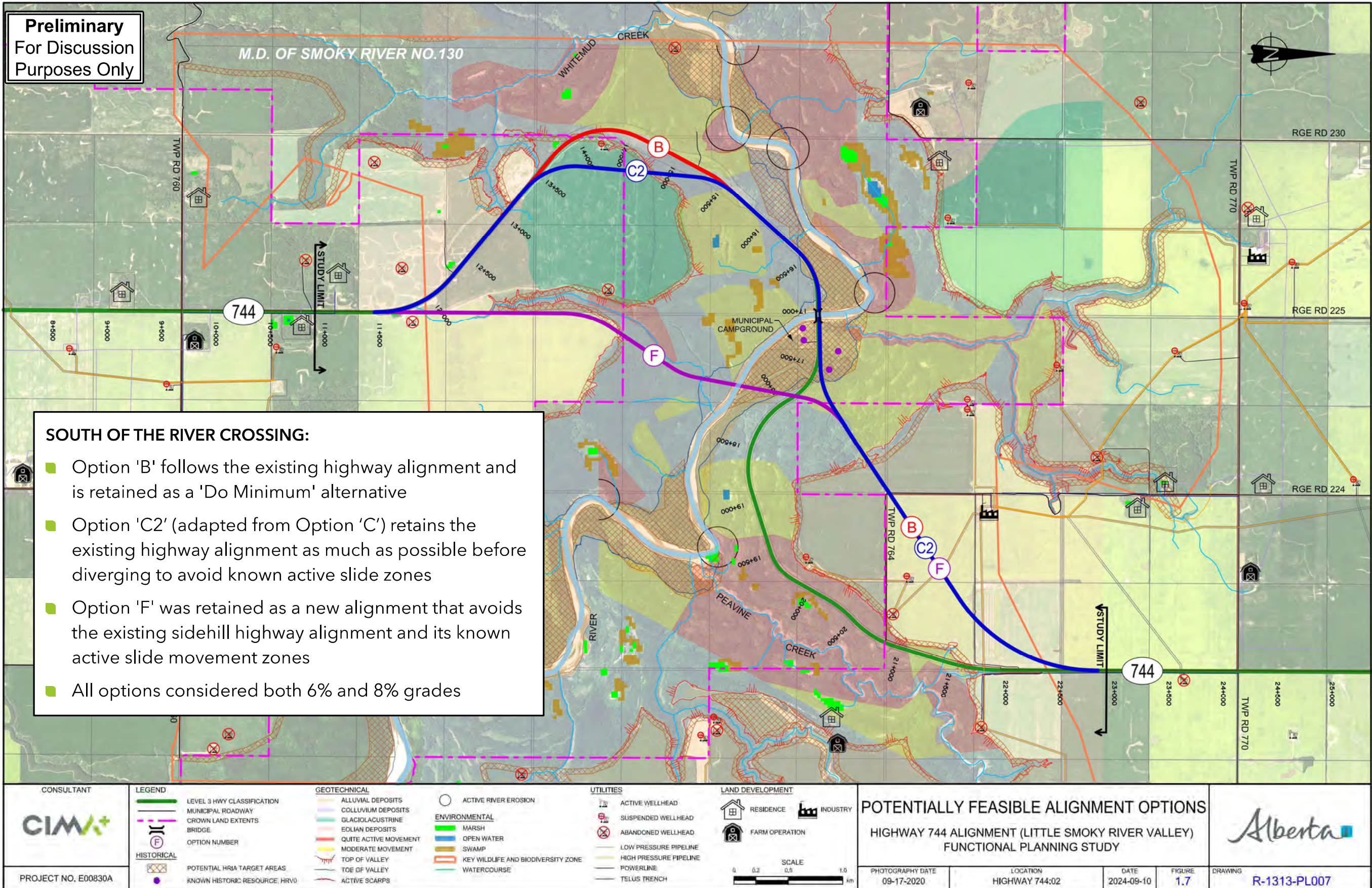
Preliminary Alignment Alternatives



Preliminary
For Discussion
Purposes Only

	LEGEND LEVEL 3 HWY CLASSIFICATION MUNICIPAL ROADWAY CROWN LAND EXTENTS BRIDGE OPTION NAME HISTORICAL POTENTIAL HRIA TARGET AREAS KNOWN HISTORIC RESOURCE, HRV0	GEOTECHNICAL ALLUVIAL DEPOSITS COLLUVIUM DEPOSITS GLACIOLACUSTRINE EOLIAN DEPOSITS QUITE ACTIVE MOVEMENT MODERATE MOVEMENT TOP OF VALLEY TOE OF VALLEY ACTIVE SCARPS	ACTIVE RIVER EROSION ENVIRONMENTAL MARSH OPEN WATER SWAMP KEY WILDLIFE AND BIODIVERSITY ZONE WATERCOURSE	UTILITIES ACTIVE WELLHEAD SUSPENDED WELLHEAD ABANDONED WELLHEAD LOW PRESSURE PIPELINE HIGH PRESSURE PIPELINE POWERLINE TELUS TRENCH	LAND DEVELOPMENT RESIDENCE FARM OPERATION INDUSTRY	PRELIMINARY ALIGNMENTS HIGHWAY 744 ALIGNMENT (LITTLE SMOKY RIVER VALLEY) FUNCTIONAL PLANNING STUDY	
	PROJECT NO. E00830A	SCALE 0 0.2 0.5 1.0 km	PHOTOGRAPHY DATE 09-17-2020	LOCATION HIGHWAY 744:02	DATE 2024-09-10	FIGURE 1.6	DRAWING R-1313-PL006

Potentially Feasible Alignment Alternatives



Final Screening

Criteria No.:	1		2	3	4		5		6		7
OPTION	Design		Environmental & Historical Resources	Bridge Placement & River Training	Geotechnical Stability		Staging and Detours		Impact to Land Use		Preliminary Cost Estimate
	% Grade & Design Speed	Campground Access			Risk and Uncertainty	Service Life	Traffic Disruption & Constructability	Stageability	Fragmentation & Removal	Surplus Fill on Quarter Sections	
B	Moderate	Moderate	Good	Best	Poor	Worst	Moderate	Good	Good	Moderate	Moderate
B-8	Poor	Good	Good	Best	Moderate	Poor	Moderate	Good	Best	Best	Good
C2	Best	Poor	Good	Best	Best	Good	Poor	Good	Poor	Worst	Poor
C2-8	Moderate	Moderate	Good	Best	Best	Good	Poor	Good	Moderate	Best	Good
F	Best	Good	Worst	Good	Good	Good	Moderate	Worst	Moderate	Worst	Worst
F-8	Moderate	Good	Worst	Good	Good	Good	Moderate	Worst	Good	Best	Good

Screening Criteria

1. Design

Highway grade & design speed and the changes needed to restore access to the campground

2. Environmental & Historical Resources

Impact on watercourse crossings, fisheries and historical resources.

3. Bridge Placement & River Training

Structure and bridge design requirements, including river and slope protection needs

4. Geotechnical Stability

Compares design requirements to establish a stable roadway and minimize risk of future failures and road closures.

RANKING LEGEND

Scale:	Poor Outcomes			Better Outcomes	
		Worst	Poor	Moderate	Good

5. Staging & Detours

Ease of upgrading the project over several years, minimizing disruption to traffic flow & access and ease of construction

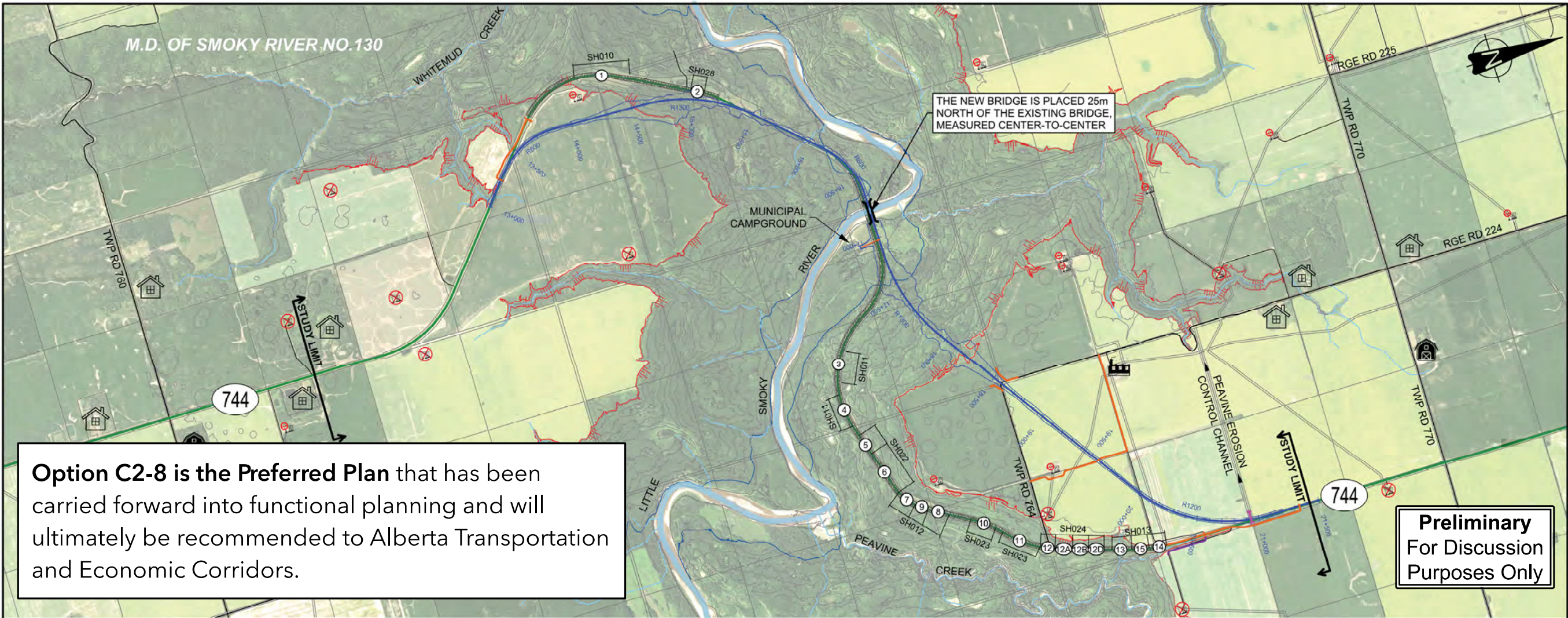
6. Impact to Land Use

Fragmentation and removal of existing agricultural and grazing areas, impacts due to disposal of surplus fill.

7. Preliminary Cost Estimate

Anticipated construction and property costs

Preferred Plan - Option C2-8



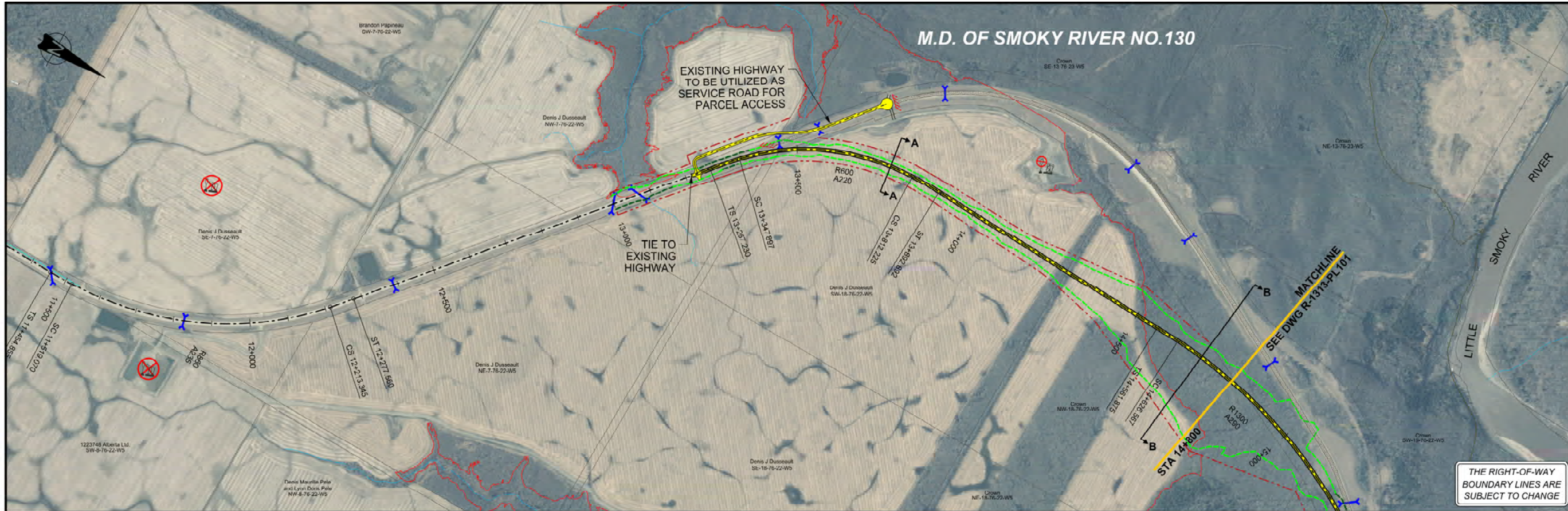
Option C2-8 is the Preferred Plan that has been carried forward into functional planning and will ultimately be recommended to Alberta Transportation and Economic Corridors.

Preliminary
For Discussion
Purposes Only

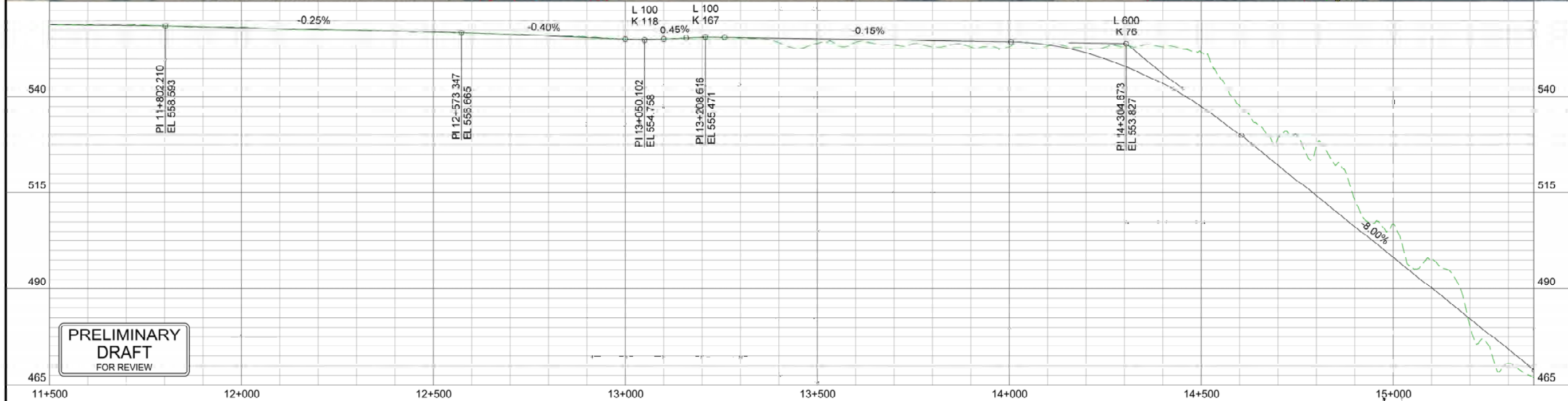


CONSULTANT 	LEGEND EXISTING HWY 744 CENTRELINE MUNICIPAL ROADWAY BRIDGE CULVERT REQUIRED ROAD REMOVAL SERVICE ROAD LEASE ROAD	ENVIRONMENTAL WATERCOURSE	GEOTECHNICAL TOP OF VALLEY TOP OF VALLEY TURN CONTOUR LINES SH021 PEACE REGION/ SWAN HILLS DISTRICT SITE NUMBER (2) SUBSITE NUMBERS	LAND DEVELOPMENT RESIDENCE FARM OPERATION INDUSTRY	UTILITIES ACTIVE WELLHEAD SUSPENDED WELLHEAD ABANDONED WELLHEAD	RECOMMENDED ALIGNMENT HIGHWAY 744 ALIGNMENT (LITTLE SMOKY RIVER VALLEY) FUNCTIONAL PLANNING STUDY		
						PROJECT NO. E00830A	SCALE 0 0.2 0.5 1.0 km	

Functional Plan - Preferred Option C2-8



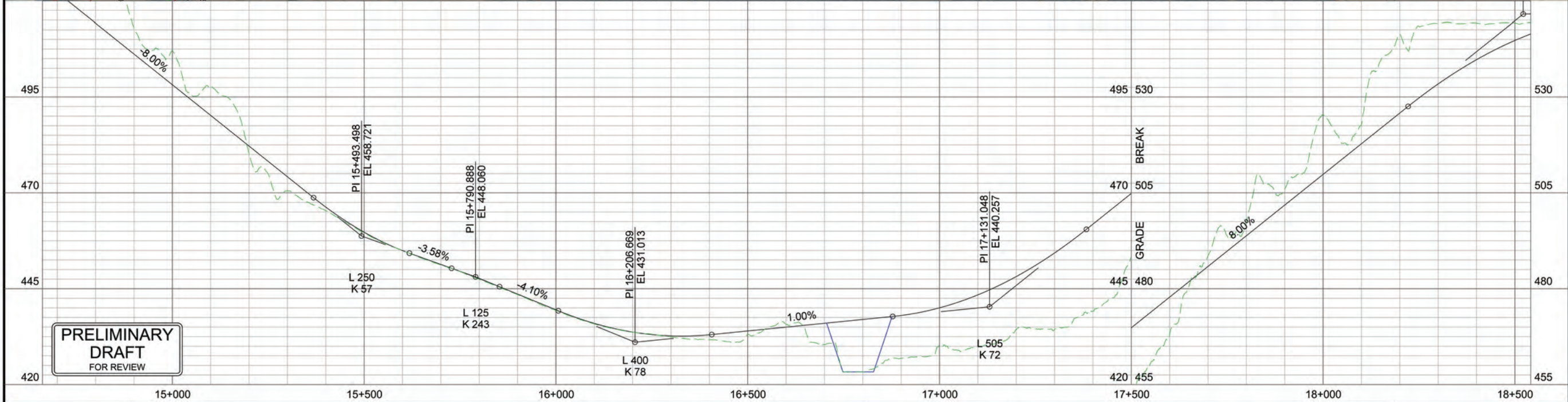
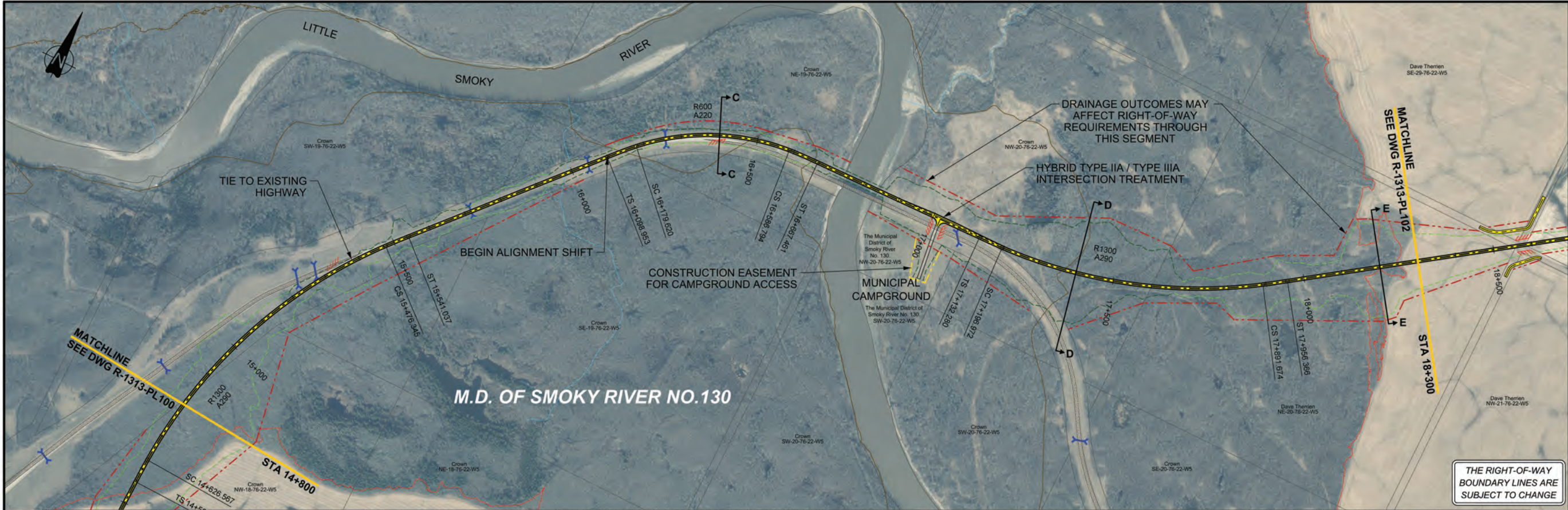
THE RIGHT-OF-WAY BOUNDARY LINES ARE SUBJECT TO CHANGE



PRELIMINARY DRAFT FOR REVIEW

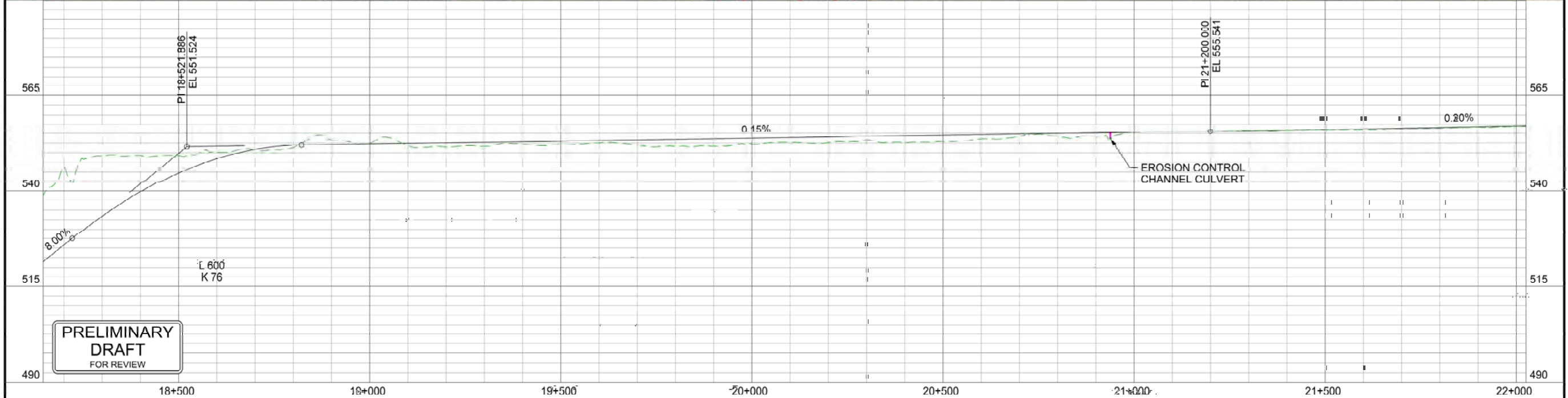
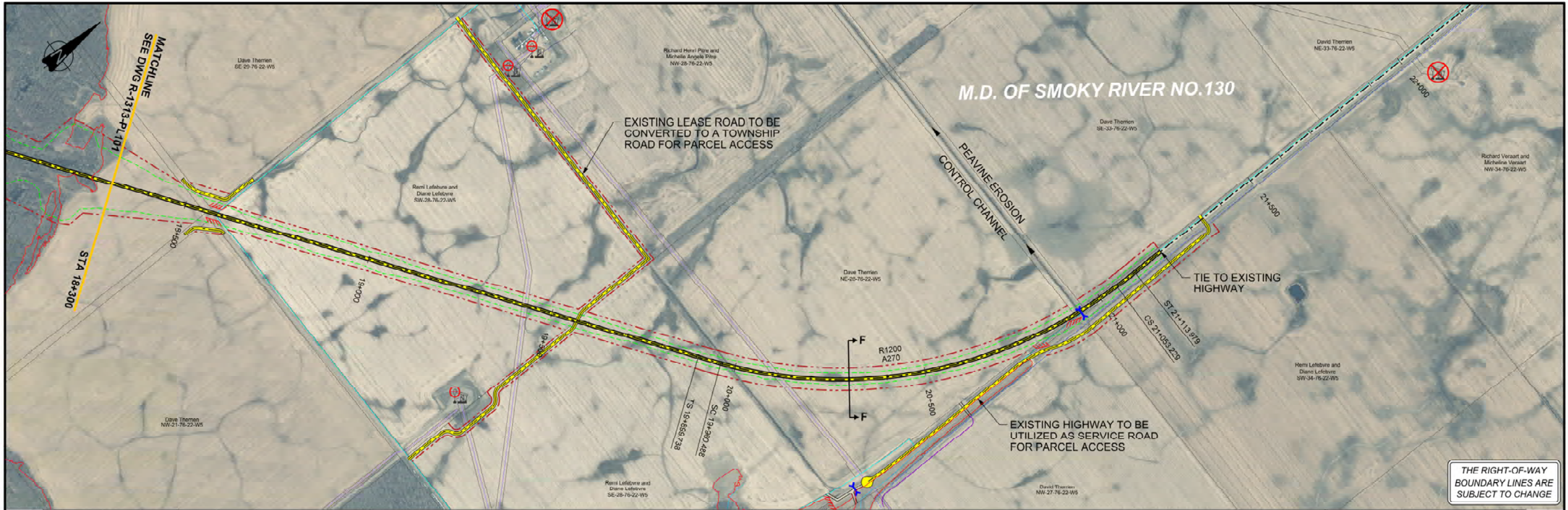
CONSULTANT 	LEGEND 	PLAN & PROFILE FOR PREFERRED OPTION C2-8 HWY 744 REALIGNMENT (LITTLE SMOKY RIVER VALLEY) FUNCTIONAL PLANNING STUDY		
		PROJECT NO. E00830A	PHOTOGRAPHY DATE: 2019-05-20 HIGHWAY: HIGHWAY 744.02 DATE: 2025-05-23 SHEET: 1 OF 3 PLAN: R-1313-PL100	

Functional Plan - Preferred Option C2-8



CONSULTANT 	LEGEND <ul style="list-style-type: none"> --- PROPOSED ALIGNMENT --- CUT/FILL LIMIT --- CULVERT --- OBLITERATE PAVEMENT --- TOE OF SLOPE --- TOP OF VALLEY --- ACCESS CLOSURE --- LEASE ROAD --- POTENTIAL ROW BOUNDARY --- GAS PIPELINE --- POWER LINE --- TELUS TRENCH ACTIVE WELLHEAD SUSPENDED WELLHEAD ABANDONED WELLHEAD 	<ul style="list-style-type: none"> CROSS SECTION DWG R-1313-PL103 	 VERTICAL SCALE 1:500 HORIZONTAL SCALE 1:5000	PLAN & PROFILE FOR PREFERRED OPTION C2-8 HWY 744 REALIGNMENT (LITTLE SMOKY RIVER VALLEY) FUNCTIONAL PLANNING STUDY		
				PROJECT NO. E00830A	PHOTOGRAPHY DATE 2019-05-20	

Functional Plan - Preferred Option C2-8



CONSULTANT 	LEGEND <ul style="list-style-type: none"> --- PROPOSED ALIGNMENT --- CUT/FILL LIMIT --- CULVERT --- OBLITERATE PAVEMENT --- TOE OF SLOPE --- TOP OF VALLEY --- ACCESS CLOSURE --- LEASE ROAD --- POTENTIAL ROW BOUNDARY --- GAS PIPELINE --- POWER LINE --- TELUS TRENCH ACTIVE WELL HEAD SUSPENDED WELL HEAD ABANDONED WELL HEAD CROSS SECTION DWG R-1313-PL103 		PLAN & PROFILE FOR PREFERRED OPTION C2-8 HWY 744 REALIGNMENT (LITTLE SMOKY RIVER VALLEY) FUNCTIONAL PLANNING STUDY		
			PROJECT NO. E00830A	PHOTOGRAPHY DATE 2019-05-20	

Next Steps

- Review and summarize Information Session comments
- Confirm Option C2-8 as the preferred alternative
- Finalize environmental, stormwater, bridge planning, geotechnical requirements, and access management
- Finalize functional plans
- Recommend final plan to Alberta Transportation and Economic Corridors
- Update website with approved plan & notify stakeholders



Highway 744, Looking West Across the Little Smoky River Valley

Keep In Touch



Your feedback is important.
Please fill out a comment form.



Was the information provided helpful in understanding the study? Please provide your general comments on the study information presented.



To receive notification when the approved plan is available, please provide your email address on the comment forms.

Information session information will be available at:
<https://www.alberta.ca/highway-744-little-smoky-river-valley>

Thank you for attending!