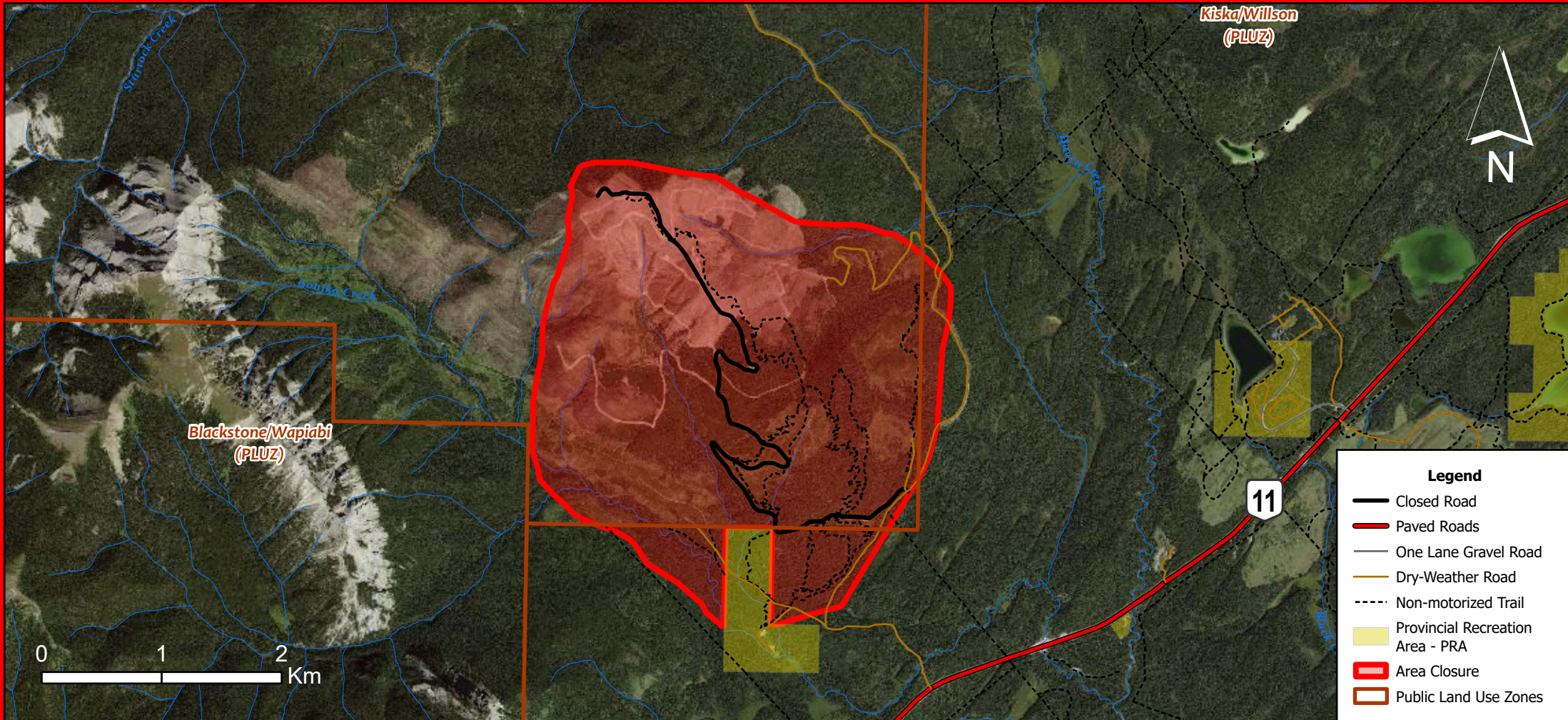


BLACK MOUNTAIN TRAIL NETWORK CLOSURE

Closed during timber harvest operations



Alberta
Closure of Area
Section 48(1) Public
Lands Administration
Regulation AR187/2011

Closure Dates: February 23, 2026 - March 22, 2026

For more information, call Rocky Mountain House office during regular business hours at (403) 845-8250 or 310-LAND (5263)

