



Power Line Hazard Assessment Plan (PHAP)

User manual

© Power Line Hazard Assessment Plan (PHAP) User Manual | Forestry and Parks

© 2024 Government of Alberta | November 29, 2024

This publication is issued under the Open Government Licence – Alberta (<http://open.alberta.ca/licence>). Please note that the terms of this licence do not apply to any third-party materials included in this publication.

This publication is available online at https://www.alberta.ca/system/files/custom_downloaded_images/ftp-phap-user-manual.pdf

Power Line Hazard Assessment Plan (PHAP) User Manual

Contents

Disclaimer:	iv
1.0 Introduction to PHAP	1
1.1 Purpose of PHAP.....	1
1.2 Pre-application requirement	1
1.3 Technical support	1
2.0 Accessing the PHAP application	2
2.1 Obtaining an Alberta.ca account and accessing the AGSP portal	2
2.1.1 Accessing the AGSP portal and joining application groups.....	2
2.2 Accessing the application	5
3.0 Navigating in PHAP	6
3.1 Activating the tool bar	6
3.2 Using the navigation features	7
3.2.1 Go to location	7
3.2.2 Open and close the coordinates widget.....	7
3.2.3 Right-click on the map.....	8
3.2.4 Layers	8
4.0 How to use the PHAP application	10
4.1 Locating the PHAP tool	10
4.2 Drawing a power line	10
4.3 Uploading a shapefile	10
4.4 Inputting PHAP parameters.....	10
4.5 PHAP analysis.....	11
4.5.1 Analysis inputs	11
4.5.2 Analyzing fire behaviour potential	12
4.5.3 Tree strike risk analysis.....	13
4.5.4 PHAP report and its application	13
4.5.5 Submitting the PHAP report.....	14

Disclaimer:

In this disclaimer provision:

“Crown” means His Majesty the King in right of the Province of Alberta;

“Minister” means the Minister responsible of Alberta Forestry and Parks;

“Their employees” means and includes each, any and every officer, employee, servant and agent of either or both of the Crown and the Minister and without limiting the generality of the foregoing, and includes employees of the Crown and the Minister employed in Alberta Forestry and Parks;

“PHAP” means the Power Line Hazard Assessment Plan and all programs, hardware, documentation, functions and services forming a part thereof or associated therewith.

The Crown, the Minister and their employees and the contractors and technical advisors of the aforesaid:

- (a) Make no warranty or representation, whether expressed or implied, to any person with respect to this material or documentation of PHAP or as to the service, performance, quality, merchantability or fitness of any part of the aforesaid for any purpose; and
- (b) Shall not be liable for any action, damages or claims, whether occasioned by negligence or otherwise, that any person, user, subscriber or any employees of the aforesaid may hereafter have, allege or become entitled to (including but not limited to any claim of third party contribution of indemnity, any economic or moral loss, or direct, immediate, special, indirect or consequential damages which do, may, or are alleged to arise as a result of:
- (c) The use of this material or documentation or PHAP or any service connection therewith; or
- (d) Any error or omissions in the data or any loss or partial loss of data or incomplete retrieval of information, even if any of all of the Crown, the Minister or their employees were advised of the possibility of such risk, action, claims or damages, including damages sustained or actions brought by third parties and claims made against the subscriber by third parties.

The entire risk of loss relating to or associated with the quality and performance of PHAP and any product and results thereof shall be assumed by the subscriber and by any other user of PHAP.

1.0 Introduction to PHAP

1.1 Purpose of PHAP

The purpose of a Power Line Hazard Assessment Plan (PHAP) is to help power line operators reduce wildfire risk within their operations, reduce wildfire ignitions caused by power lines and improve partnerships for wildfire risk reduction. This application can help power line operators identify areas where hazard trees and/or potential vegetation contacts may exist near their infrastructure and identify areas where other power line related ignitions might support large wildfire growth. Companies may also analyze the fire behaviour potential near assets to inform mitigation activities to protect their infrastructure. This information can inform power line maintenance as well as the design and engineering of the power line right-of-way.

NOTE: No information during the PHAP analysis is recorded, stored or collected by the Government of Alberta (GOA). Each analysis, including data uploaded into the application, remains confidential to the individual or company conducting the assessment.

1.2 Pre-application requirement

The PHAP is applicable to all power lines within the province of Alberta. On public land, PHAPs are a pre-application requirement for approving formal power line dispositions within the Forest Protection Area (FPA). This also applies to Vegetation Control Easements (VCE/RVC), but not to buried power lines. Where the proposed power line intersects an identified FireSmart Community Zone, the PHAP must be referred to the local Wildfire Prevention Officer.

1.3 Technical support

This guide should provide an answer to most questions that may arise during the PHAP process. If you still have questions or concerns regarding the application after reviewing the user guide, email aws.service@gov.ab.ca. Support is available Monday to Friday from 8:15 a.m. to 4:30 p.m. When you are reporting an error or issue, please take a screen capture and include it with your message, as this will help staff to narrow down the underlying cause.

2.0 Accessing the PHAP application

2.1 Obtaining an Alberta.ca account and accessing the AGSP portal

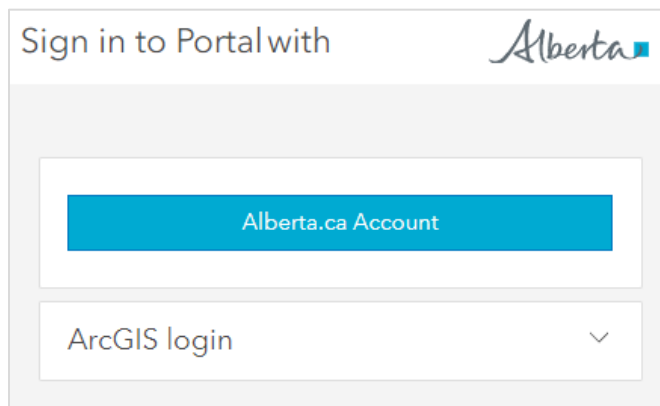
To access the Alberta Geospatial Services Platform you will require a verified [Alberta.ca account](#). Once an account is created and verified you will be able to access the AGSP Portal. For instructions on how to create an Alberta.ca account visit <https://www.alberta.ca/alberta-ca-account>

2.1.1 Accessing the AGSP portal and joining application groups

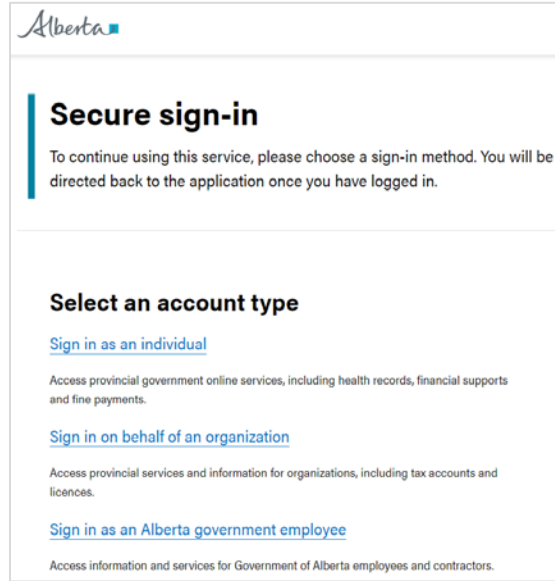
This step will create an Alberta Geospatial account that you will need to access the Application Groups. Accessing the portal and joining the individual groups must be done once for each Application Group to which you require access.

To activate your Alberta Geospatial account:

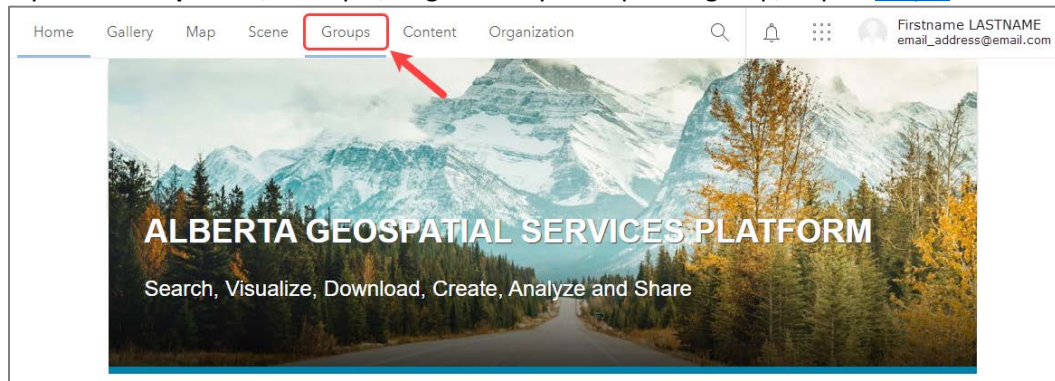
1. **Go to** the Alberta Geospatial Services Platform (AGSP) Portal
 - a. **Option 1:** To join and access Applications click on the main portal link below and click on the “Sign In” button.
<https://geospatial.alberta.ca/portal/home/>
 - b. **Option 2:** If you know which Wildfire Application Group you want to join, click the appropriate link below.
[PHAP Application](#)
2. **Click** the blue “Alberta.ca Account” button.



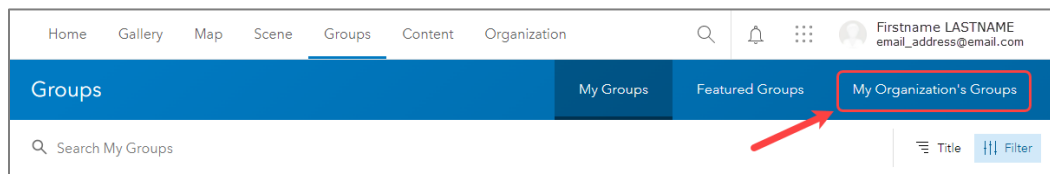
3. **Click** the appropriate link to sign into your account.



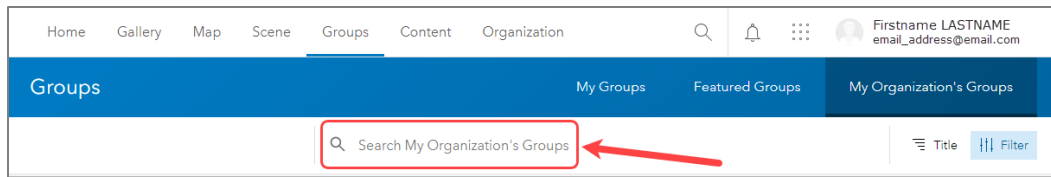
4. **Enter** your Alberta.ca username and password. Once signed in you will be redirected back to the Alberta Geospatial Portal.
5. **Click** on the "Groups" tab on the Alberta Geospatial Services Platform (AGSP) Portal. If you chose **Option 2**, in Step 1, to go directly to a specific group, skip to [Step 9](#).



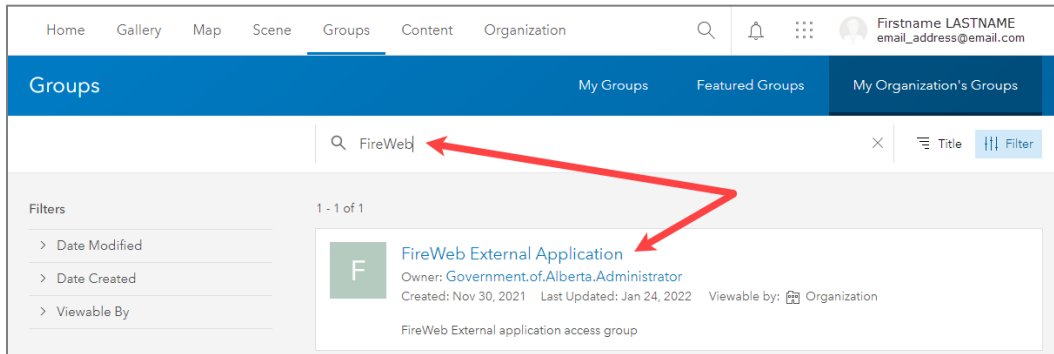
6. **Click** on "My Organization's Groups" button.



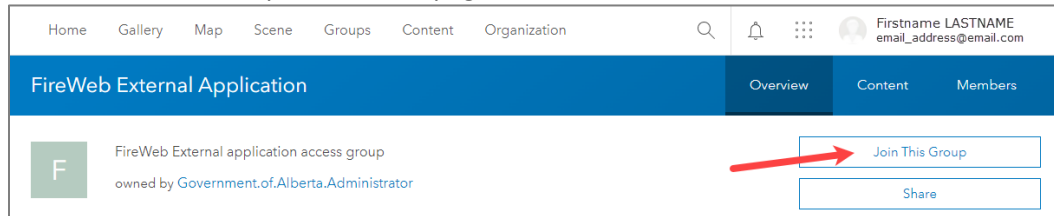
7. **Type** the name of the Application Group that you wish to join using the Search function in the "Search My Organization's Groups" box, i.e., PHAP.



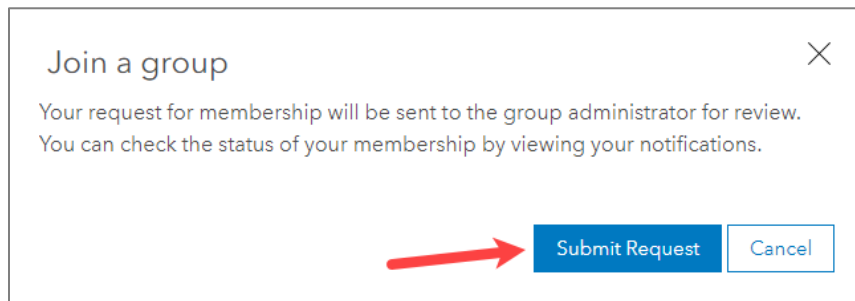
8. **Click** on the Group that matches the search when it appears.



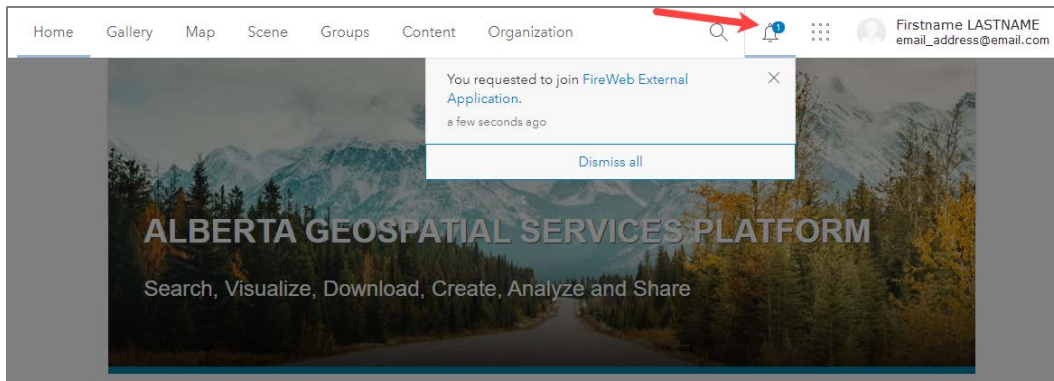
9. **Select** “Join This Group” in the new page.



10. **Click** “Submit Request” in the pop-up to “Join a group”.



11. Once your request is approved by the Groups administrator you will receive a notification under the bell icon in the top right next to your identification. **Please Note:** There is no email notification, you will have to check back in the portal for the notification to appear under the bell icon.



If you do not receive approval within one business day, please contact the Geospatial Services Support Team through email at SA.AGSP@gov.ab.ca.

2.2 Accessing the application

1. Use this link to access the PHAP application: <https://geospatial.alberta.ca/PHAP>

A *Terms of Use* Page will display on your first visit. **Click** the “check box” to agree to the terms of use, then **click** the “Continue” button.

Terms Of Use

While every effort has been made to ensure that the information accessible from this site is complete, accurate, and current, the Government of Alberta, their agents and employees are not liable for any loss or damage arising directly or indirectly from the possession, publication, or use of, or reliance on, that information. This information is provided "as is" without expressed or implied warranty.

All base feature data accessible from this site are owned by the Government of Alberta and protected by copyright law. No base feature data can be reproduced or distributed without the prior written permission of the Government of Alberta.

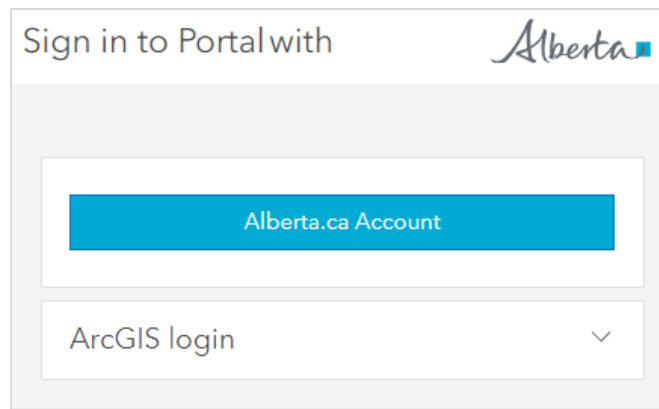
Base Map Data provided by the Government of Alberta under the Alberta Open Government Licence. Cadastral and Dispositions Data provided by Alberta Data Partnerships. Other data are provided by the ministry of Alberta Agriculture and Forestry (AAF).

This mapping website is maintained by the provincial government.

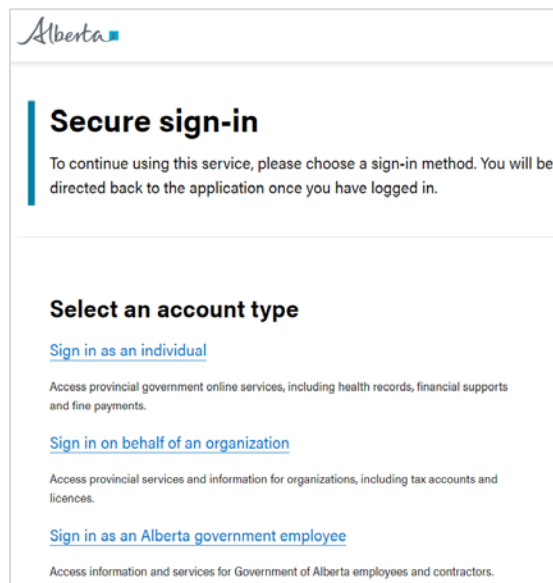
Please click on the checkbox to consent to the content of this page then click on the Continue button to proceed to the site.

I have read and understand this terms of use agreement. My use of this site is acknowledgment of my agreement to be bound by these terms and conditions.

2. **Click** the blue “Alberta.ca Account” button.



3. **Click** the appropriate link to sign into your account.



4. **Enter** your Alberta.ca username and password. Once signed in you will be redirected back to the Alberta Geospatial Portal.

3.0 Navigating in PHAP

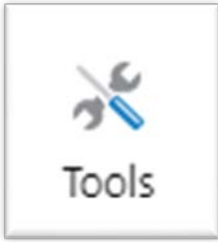
This section will highlight some of the more useful features in PHAP for navigating and running the analysis.

3.1 Activating the tool bar

When the initial PHAP page loads, the following tab menu should appear at the top of the screen.



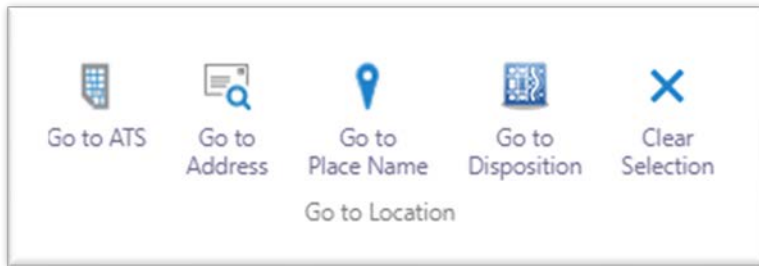
If the tool bar tab is not visible, make sure that the “tool label” tab is checked on at the top right of the screen. You may also need to select the “tools” icon at the top right-hand side of the screen to display the tool bar.



3.2 Using the navigation features

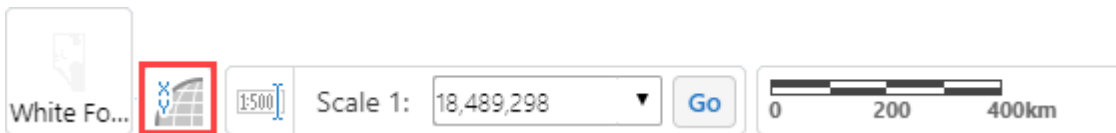
3.2.1 Go to location

When you first load the PHAP, you are directed to a provincial map view. A simple way to find your location of interest is from the navigation tab. To the right is the “go to location” tab with several useful features for navigating by legal land location, place name or address.

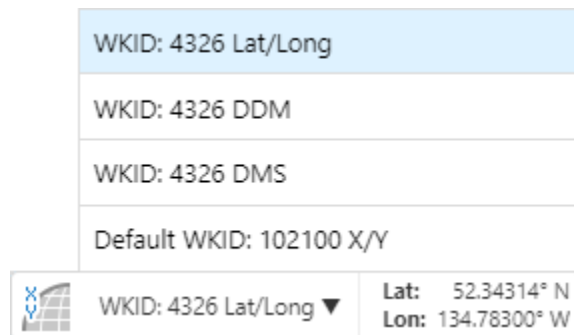


3.2.2 Open and close the coordinates widget

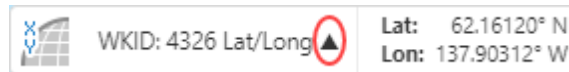
The “coordinate” widget is in the lower left corner of the map frame and provides you with the current coordinates of the cursor. Click the widget to open and close the tool.



You can move the cursor around the map and the tool will display the coordinates in latitude and longitude, or you can select another coordinate system using the drop-down tool.



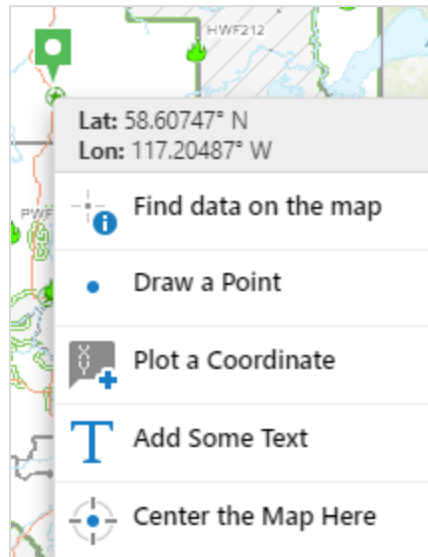
WKID meaning: the spatial reference of a map, layer or inputs to and outputs from a task. Each projected and geographic coordinate system is defined by either a well-known ID (WKID) or a definition string (WKT).¹



3.2.3 Right-click on the map

There are additional tools you can use on a location by right-clicking on the map in the Map Frame.

When a location is right clicked, a green tag appears. A menu opens with the coordinates of the location in decimal degrees format and displays a variety of functions you can perform.



3.2.4 Layers

Several data layers are provided to inform the PHAP analysis. To activate the layers, click on "layer list". To view the map legend information about each layer, select "legend".

Operational layers: the layers within PHAP that are most pertinent to supporting wildfire risk analysis for power lines are the following:

- a. FireSmart Community Zone: Areas near communities where complete debris disposal is needed for timber harvest operations, as well as a required referral of the completed PHAP to the local Wildfire Prevention Officer to support community FireSmart planning.
- b. FireSmart Crown Reservation Area (FireSmart CLR): Areas where consultation with Alberta Wildfire is required prior to approval of new disposition approvals (not all community zones overlap with a FireSmart CLR).
- c. Power line data: Power line and pole infrastructure data are provided for most of the major power line operators in Alberta.

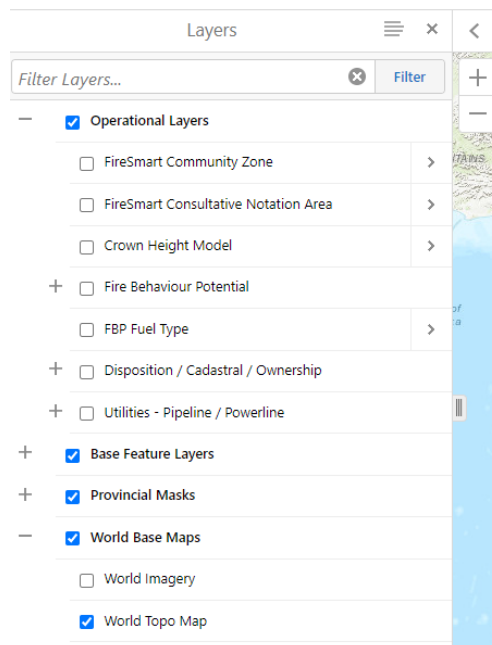
¹ The WKID meaning was taken from the ArcGIS for Developers site:
<https://developers.arcgis.com/javascript/3/jsapi/spatialreference-amd.html>

- d. Crown Height Model (CHM): Canopy height data is derived from several LiDAR datasets that have been stitched together. It references the tallest tree within the defined 5 x 5 metre grid cell. The currency of this data depends on the date of capture, which is available as a sub-layer.
- e. Fire Behaviour Potential (FBP): Head Fire Intensity (HFI) that has been re-classed and weighted by Crown Fraction Burned (CFB), the percentage of crown consumed. The CFB weighting represents the potential for ember generation, which would increase the spread of the wildfire through ember ignition. Grass fuel types are not weighted by CFB. Each class indicates the difficulty of controlling the spread of a wildfire on a 90th percentile weather day, with “low” being the easiest to control to “extreme” having a high likelihood of escaping control.
- f. FBP fuel types: Fuel types as defined by the Canadian Forest Fire Behaviour Prediction System. Descriptions can be found here: <https://cwfis.cfs.nrcan.gc.ca/background/fueltypes/d1>
- g. Disposition/Cadastral/Ownership: Up-to-date disposition information for public lands in Alberta, as well as crown or titled ownership and cadastral data.
- h. Mountain pine beetle data: Red attack tree survey data is available for the previous 15 years. Larger dots indicate a higher count of red trees for that surveyed location.

World base maps

World imagery: a combination of high and low-resolution satellite and aerial imagery for most of the world from multiple sources, typically within 3-5 years of currency.

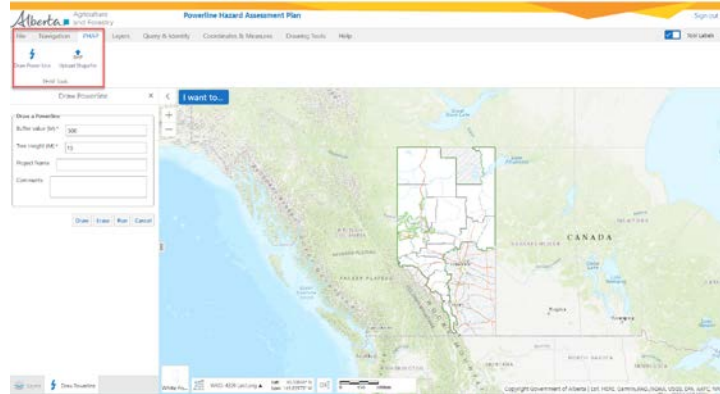
Tip: Layer names may be partially displayed in the layer list due to their length. To view the full layer title, expand the section by clicking on the tab on the right side of the layer menu.



4.0 How to use the PHAP application

4.1 Locating the PHAP tool

To generate a PHAP, the user must select the “PHAP” tab at the top left of the screen. Selecting this tab will display two options to either “draw a power line” or “upload a shapefile.”



4.2 Drawing a power line

Drawing a power line is a simple way to draw a planned or existing right-of-way (ROW) on the map for analysis purposes. You can use this tool when you need to analyze small segments, when you don't have a shapefile or when you're analyzing possible locations for a future ROW. Simply select “draw a power line,” which opens the menu (pictured above). At the bottom of the menu, select the “draw” button. Zoom into the location of interest and click once to start the power line segment. Each click will allow you to change the direction of the line segment. To end the drawing, double click the mouse button. To erase the power line, select “erase.”

Tip: displaying a combination of disposition, power line data and world imagery will ensure that you have correctly drawn the power line in reference to current infrastructure and other land use activities.

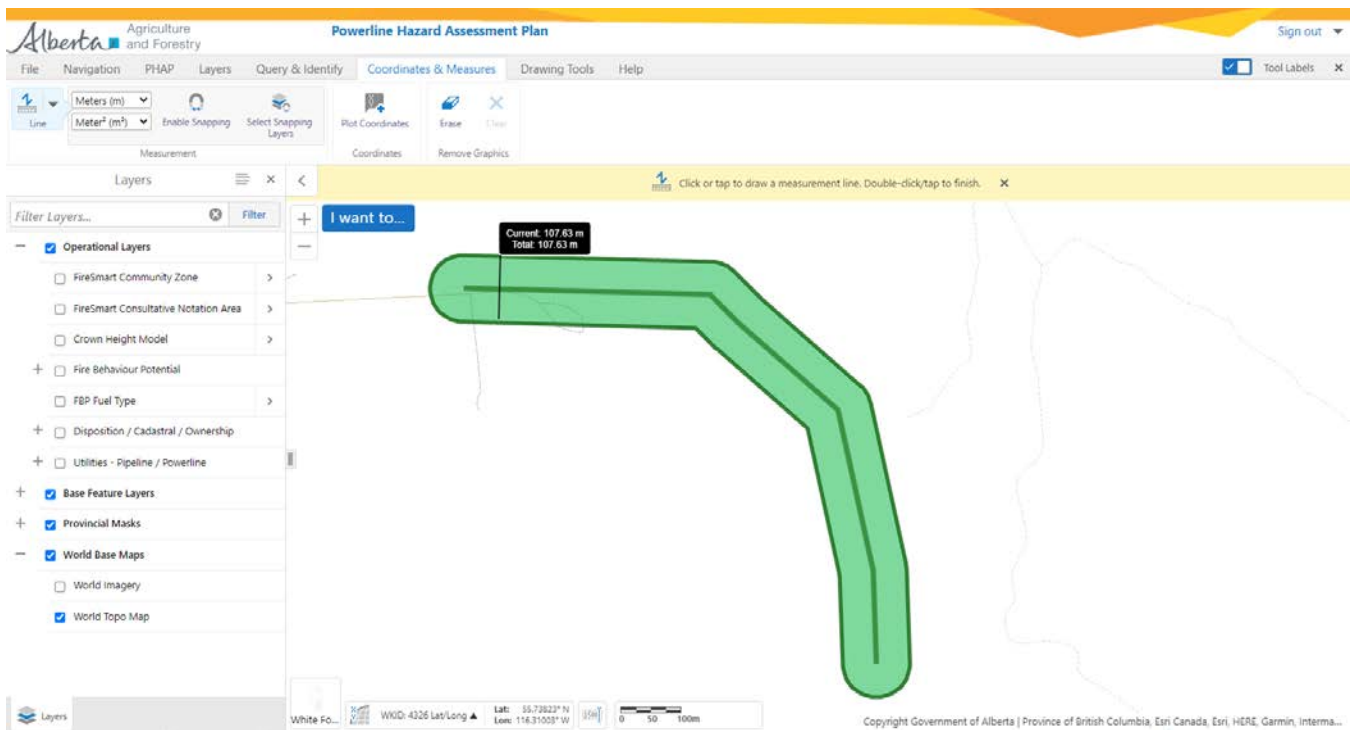
4.3 Uploading a shapefile

Uploading a shapefile into PHAP is the most efficient and accurate method for analyzing larger right-of-ways or sections of line. Select “upload shapefile” from the PHAP menu tab (pictured above) and select “choose file.” Browse to where the file is located and select the .shp, .dbf and .prj files. All three files must be included for the upload to work. **The shapefile must be in the polyline format projected in 10TM AEP Forest.** If a point or polygon or the wrong projection is used, you will receive an error message. Note, that elevation cannot be included in the attribute table, or you will receive an error.

4.4 Inputting PHAP parameters

The following parameters must be known and inputted correctly prior to running the analysis.

1. Tree height (m): Tree height must pre-determined by the user for the analysis based on a company's risk tolerance, line strike probability, clear width and other factors. This data informs the application of the tree height threshold to use within the analysis.



2. Tree height analysis distance (m): The distance on each side of the right of way that should be analyzed for the determined tree height. A maximum distance of 100m is allowed.
3. Project name: The unique identifier of the name of the project being analyzed.
4. Comments: Optional information to include about the analysis.

Draw a Powerline

Tree Height (M) *

Tree height analysis distance *

Project Name

Comments

5. Once you are satisfied with the input parameters, select “run” to start the PHAP analysis.

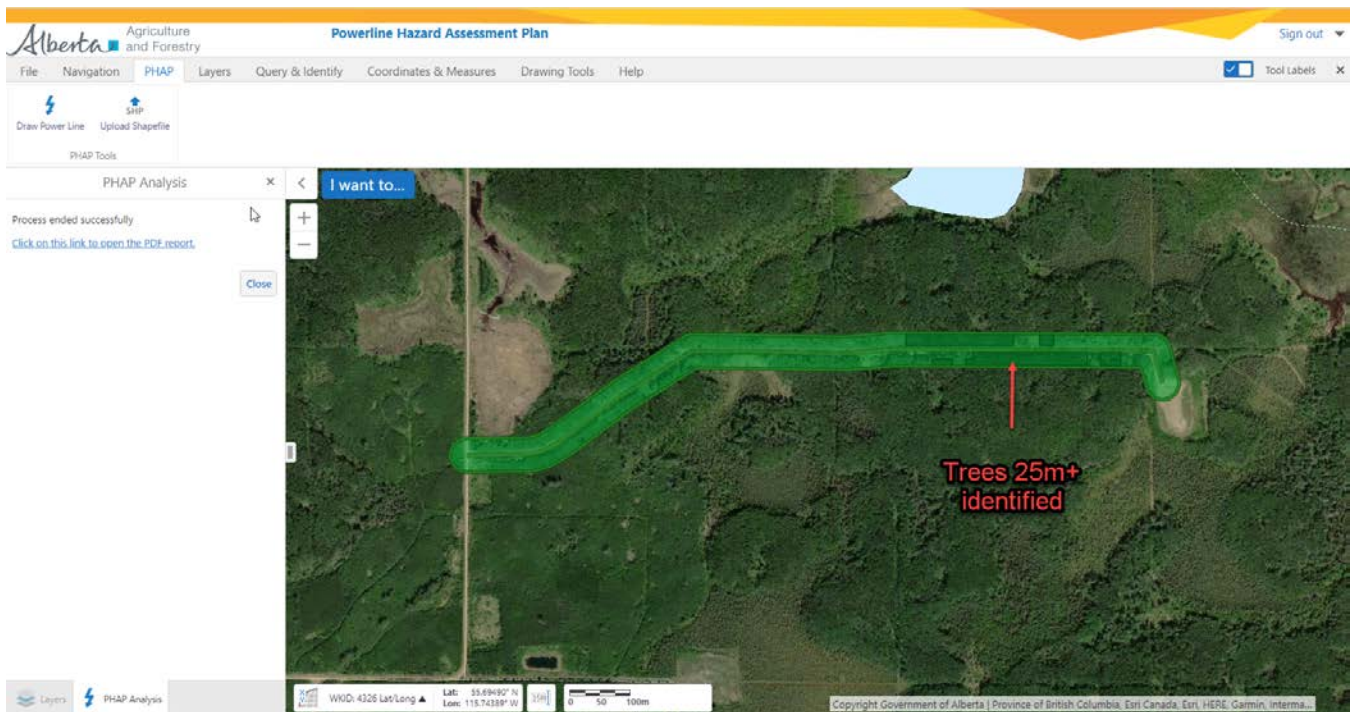
4.5 PHAP analysis

4.5.1 Analysis inputs

The PHAP analysis generally takes a minute or less to run for small to medium lines. Larger lines or areas will take longer to analyze.

1. The application will draw the buffer which will be used to analyze tree height according to the user input.
2. The application analyzes the canopy height model to determine which trees within the buffer meet the minimum determined height.

3. The percent total area of fire behaviour potential for spring, summer and fall adjacent to the right of way is calculated based on a default 500m buffer.



PHAP analysis with a 50-metre buffer showing trees in grey boxes that are over 25 metres in height.

4.5.2 Analyzing fire behaviour potential

Fire behaviour potential is a representation of fire intensity that has been weighted by crown fraction burn and re-classed into categories from low to extreme. It is an estimate of the difficulty of controlling a fire. Intensity is determined using historical 90th percentile weather inputs displayed in a 100 x 100 metre rasterized cell. Low fire potential indicates that ignition within this cell will be relatively easy to suppress, increasing proportionally to extreme potential, meaning that fires will prove extremely difficult to control. Crown fraction burn represents the portion of crown foliage that is consumed by wildfire. The higher the consumption, the higher likelihood of ember spotting and control difficulty.

If the power line right-of-way transects areas of high to extreme fire potential, then the power line will likely be impacted by radiant heat and embers when a fire occurs adjacent to this ROW. Seasonality is important when considering fire behaviour potential. In the boreal forest in Alberta, most of the larger catastrophic wildfires have occurred during spring when low fuel moisture and cured grass exist with significant drying supported by high-pressure weather systems. Typically, these types of spring fires do not occur in the eastern slopes, which are more prone to larger fires in the fall when the grass has cured. Deciduous (poplar) fuel types typically slow the fire spread in summer months when grass and deciduous species have fully leafed out, making them less able to sustain fire spread. The boreal forest also experiences large fires in the summer and early fall months generally driven by spruce, pine and conifer leading mixed wood fuel types. **Dry springs with strong wind events are particularly problematic for power line operators as stands of older aspen and mixed wood stands support a high risk of ignition and rapid fire spread.**

4.5.3 Tree strike risk analysis

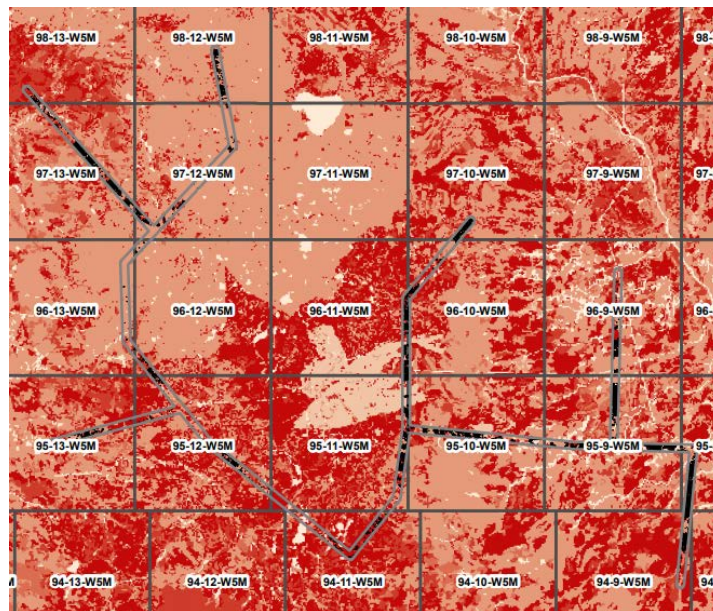
The PHAP application can help identify which stands contain trees of sufficient height to pose a risk to conductors. The CHM buffer width determines the area in which the CHM is analyzed to identify trees which meet the chosen threshold. The current CHM model identifies the height of the dominant trees within a 25 x 25 metre cell.

Aspen and white spruce are common species that cause tree strikes on power line conductors. Approximately 70 percent of power line related wildfires are caused by tree strikes, normally occurring during gusty wind events. When planning a new ROW or assessing risk to older lines, companies should use this analysis feature to identify stands that pose a risk of striking the conductor.

Note that the CHM layer has a “date of capture” layer that shows the year the LiDAR data was collected. For subsequent years, increased tree growth can be estimated using growth and yield curves. The fuel type layer is also updated annually and accounts for the previous year’s harvesting and wildfire data, which can be overlaid with the fire potential to confirm the validity of the current fuels.

4.5.3.1 Informing tree freeing and maintenance programs

The tree risk analysis can be used to analyze larger networks of power lines for potential tree strike risk. Simply upload a shapefile with the area to be analyzed and run the PHAP. The CHM analysis will give you an idea of where trees may be tall enough to strike the line based on your inputs. Areas of darker red indicate extreme fire behaviour potential. Black areas indicate where the tree heights meet or exceed the chosen threshold. Note that the canopy height model is based on the LiDAR capture date, which is noted in the layer named “LiDAR Acquisition Information.” You can adjust the height used in the analysis to capture height growth since capture date.



4.5.4 PHAP report and its application

PHAP produces a report summarizing the outputs of the analysis in a printable .pdf format. Spring, summer and fall fire behaviour potential are analyzed within each buffer. The total breakdown is presented using basic analytics.

CHM raster cells that meet the height threshold are outlined with black hashed rectangles.

Companies should consider reducing wildfires caused by tree strikes near communities with high fire potential that are adjacent to lines. If there is a risk of a tree strike and the fire potential is low to moderate in the spring, then a fire igniting here will generally be easier to control.

Strategies for reducing the risk of a wildfire caused by a power line include:

1. ROW widening: In select areas near a wildland-urban interface (WUI) community, where there is significant tree strike risk and very high to extreme fire potential, a slightly larger ROW may reduce risk to the community.
2. System hardening: Replacing older infrastructure in areas where there is very high to extreme fire potential is recommended. Not only do you decrease the likelihood of power-line-caused fires due to current leakage and faults, but you also increase the resiliency of the infrastructure to large wildfires and reduce the chance of outages.
3. Increased tree-free programs and risk patrols in areas of high to extreme spring fire risk with a high probability of tree strikes near values such as communities or critical infrastructure.

4.5.5 Submitting the PHAP report

The report must be included in the pre-application for new easements. If a new easement intersects a FireSmart Community Zone, then the company must discuss potential implications and opportunities with the local Wildfire Prevention Officer prior to application. It is recommended that the power line company reach out to the local Wildfire Prevention Officer in advance to discuss how the new ROW could affect community FireSmart planning. The area contact information is provided below.

Calgary: [\(403\) 297-8800](tel:4032978800)

Edson: [\(780\) 723-8527](tel:7807238527)

Fort McMurray: [\(780\) 743-7125](tel:7807437125)

Grande Prairie: [\(780\) 538-5560](tel:7805385560)

High Level: [\(780\) 926-3761](tel:7809263761)

Lac La Biche: [\(780\) 623-5388](tel:7806235388)

Peace River: [\(780\) 624-6190](tel:7806246190)

Rocky Mountain House: [\(403\) 845-8272](tel:4038458272)

Slave Lake: [\(780\) 849-7431](tel:7808497431)

Whitecourt: [\(780\) 778-7153](tel:7807787153)