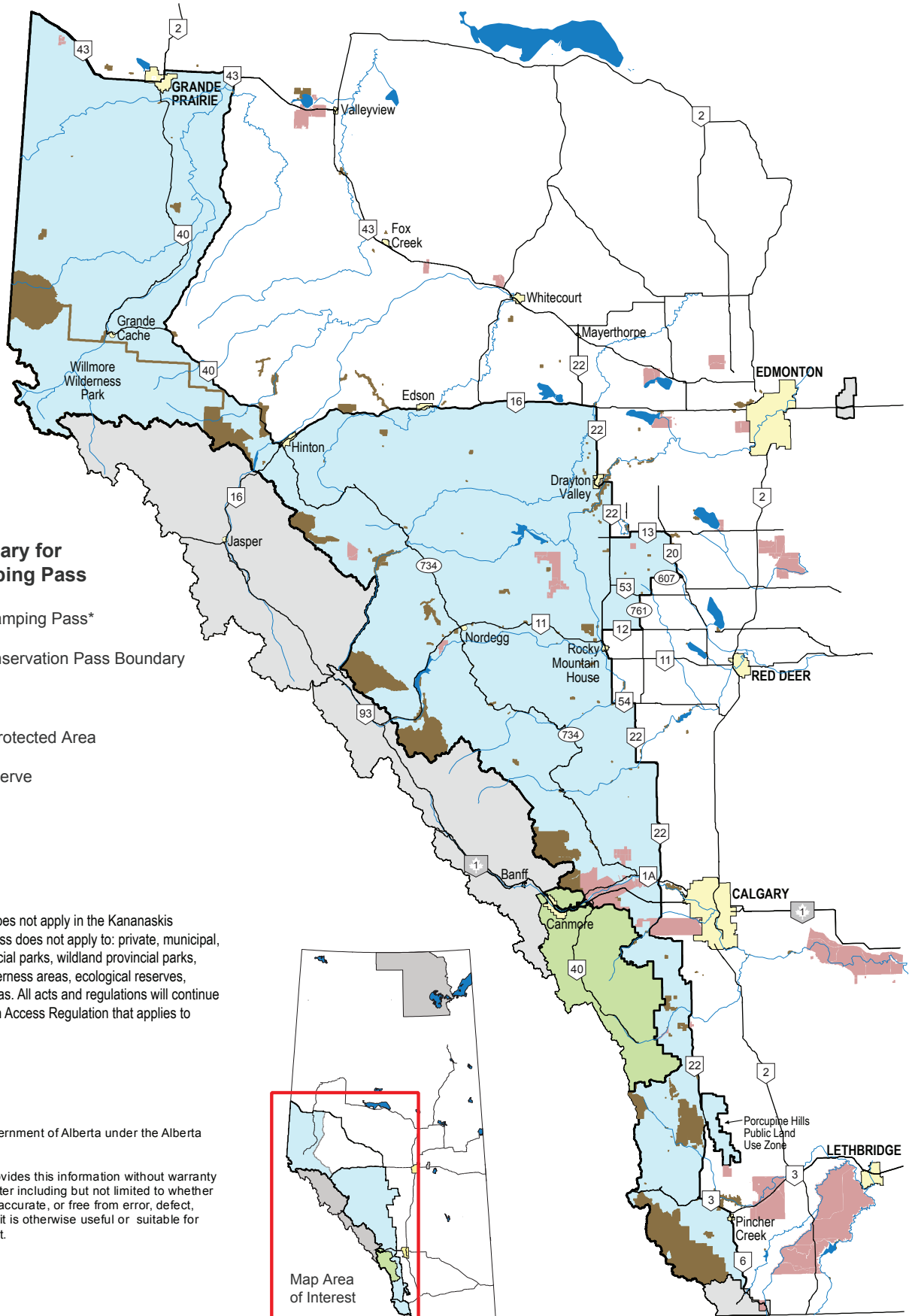


PUBLIC LANDS CAMPING PASS



Geographic Boundary for Public Lands Camping Pass

- Public Lands Camping Pass*
- Kananaskis Conservation Pass Boundary
- National Park
- Alberta Park / Protected Area
- First Nation Reserve
- Urban Area
- Waterbody
- Highway

* Public Lands Camping Pass does not apply in the Kananaskis Conservation Pass area. The pass does not apply to: private, municipal, or federally owned lands; provincial parks, wildland provincial parks, provincial recreation areas; wilderness areas, ecological reserves, heritage rangelands, natural areas. All acts and regulations will continue to apply including the Recreation Access Regulation that applies to agricultural dispositions.

© 2024 Government of Alberta

Alberta Forestry and Parks

Where applicable:
Base data provided by the Government of Alberta under the Alberta Open Data License (2021).

The Minister and the Crown provides this information without warranty or representation as to any matter including but not limited to whether the data/information is correct, accurate, or free from error, defect, danger, or hazard and whether it is otherwise useful or suitable for any use the user may make of it.

