

111°44'W 111°40'W 111°36'W 111°32'W 111°28'W 111°24'W 111°20'W 111°16'W 111°12'W 111°8'W 111°4'W 111°0'W 110°56'W



Public

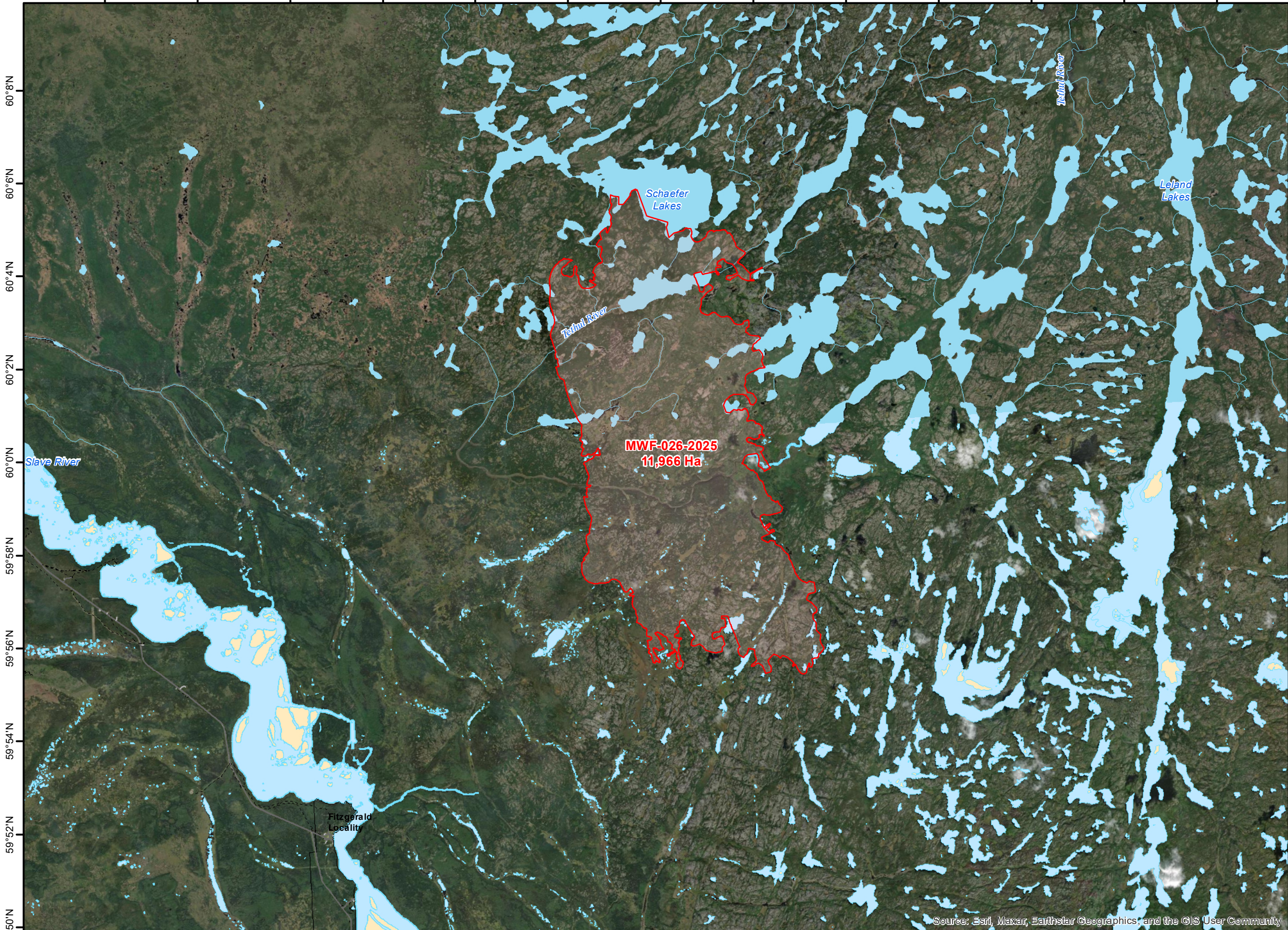
MWF-026-2025 MCX-001- Tulip Lake Complex

2025-Jun-04



1:150,000

- PerimeterSector
- Canvec waterbody labels
- Canvec waterbody (Polygons at 1 to 250K)
- Canvec watercourse labels
- Canvec watercourse (Lines at 1 to 250K)
- Island
- Perennial Lake
- Recurring Lake
- Major River



Disclaimer:
 This fire perimeter is an estimate based on measurements such as GPS, aerial scanning and satellite imagery. This estimated perimeter can change as more accurate measurements become available. Areas within the fire perimeter may not have been affected by wildfire.

Prepared by Wildfire Incident Command GIS Staff
 (c) Government of Alberta 2025
 Base Data Provided by the Government of Alberta
 Under the Alberta Open Government Licence
 All Rights Reserved
 Information depicted is subject to change
 The Government of Alberta assumes no responsibility for discrepancies at time of use

Source: Esri, Maxar, Earthstar Geographics, and the GIS User Community